

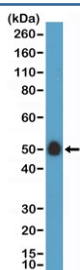
CD14 Antibody [clone RM415] (R20431)

Catalog No.	Formulation	Size
R20431-0.1ML	Antibody in PBS with 50% glycerol, 1% BSA and 0.09% sodium azide	100 ul

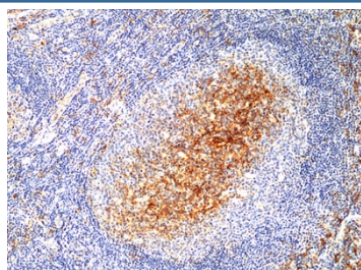
Recombinant **RABBIT MONOCLONAL**

[Bulk quote request](#)

Availability	1-3 business days
Species Reactivity	Human
Format	Purified
Host	Rabbit
Clonality	Recombinant Rabbit Monoclonal
Isotype	Rabbit IgG
Clone Name	RM415
Purity	Protein A purified from animal origin-free supernatant
UniProt	P08571
Localization	Cell surface, Secreted, Cytoplasmic (Golgi)
Applications	Immunohistochemistry (FFPE) : 1:125-1:250 Western Blot : 1:50-1:100
Limitations	This recombinant CD14 antibody is available for research use only.



Western blot testing of human placenta lysate with recombinant CD14 antibody at 1:100 dilution. Predicted molecular weight: 40-55 kDa depending on glycosylation level.



IHC staining of FFPE human tonsil tissue with recombinant CD14 antibody at 1:250.

Description

This antibody reacts to human to CD14.

Application Notes

The stated application concentrations are suggested starting points. Titration of the recombinant CD14 antibody may be required due to differences in protocols and secondary/substrate sensitivity.

Immunogen

A peptide corresponding to the C-terminus of human CD14 was used as the immunogen for the recombinant CD14 antibody.

Storage

Store the recombinant CD14 antibody at -20oC.