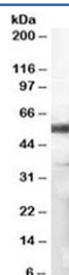


## CD14 Antibody (R34635)

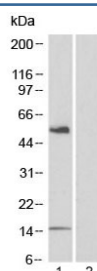
Catalog No.	Formulation	Size
R34635-100UG	0.5 mg/ml in 1X TBS, pH7.3, with 0.5% BSA (US sourced) and 0.02% sodium azide	100 ug

[Bulk quote request](#)

Availability	1-3 business days
Species Reactivity	Human
Format	Antigen affinity purified
Host	Goat
Clonality	Polyclonal (goat origin)
Isotype	Goat Ig
Purity	Antigen affinity
Gene ID	929
Localization	Cell surface, Secreted, Cytoplasmic (Golgi)
Applications	Western Blot : 1-3ug/ml ELISA (peptide) LOD : 1:128000
Limitations	This CD14 antibody is available for research use only.



Western blot testing of human lymph node lysate with CD14 antibody at 1ug/ml. Predicted molecular weight 48~56 kDa depending on presence of C-terminal leader sequence on the protein.



Western blot testing of human PBL lysate in the 1) absence and 2) presence of immunizing peptide with CD14 antibody at 1ug/ml. Predicted molecular weight 48~56 kDa depending on presence of C-terminal leader sequence on the protein.

## Description

Additional name(s) for this target protein: Myeloid cell specific leucine rich glycoprotein

## Application Notes

Optimal dilution of the CD14 antibody should be determined by the researcher.

## Immunogen

Amino acids KRVDADADPRQYAD were used as the immunogen for this CD14 antibody.

## Storage

Aliquot and store the CD14 antibody at -20oC.