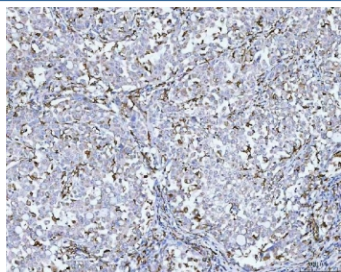


CD14 Antibody (R31917)

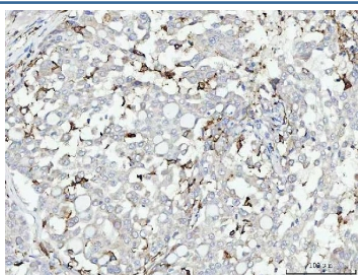
Catalog No.	Formulation	Size
R31917	0.5mg/ml if reconstituted with 0.2ml sterile DI water	100 ug

Bulk quote request

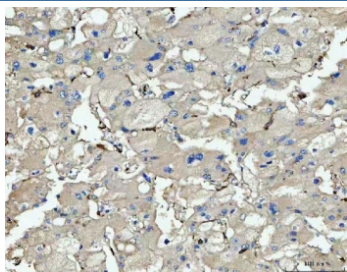
Availability	1-3 business days
Species Reactivity	Human
Format	Antigen affinity purified
Clonality	Polyclonal (rabbit origin)
Isotype	Rabbit IgG
Purity	Antigen affinity
Buffer	Lyophilized from 1X PBS with 2% Trehalose
UniProt	P08571
Localization	Cell surface, Secreted, Cytoplasmic (Golgi)
Applications	Western Blot : 0.1-0.5ug/ml Immunohistochemistry (FFPE) : 2-5ug/ml
Limitations	This CD14 antibody is available for research use only.



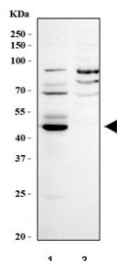
IHC staining of FFPE human lung cancer tissue with CD14 antibody. HIER: boil tissue sections in pH8 EDTA for 20 min and allow to cool before testing.



IHC staining of FFPE human lung cancer tissue with CD14 antibody. HIER: boil tissue sections in pH8 EDTA for 20 min and allow to cool before testing.



IHC staining of FFPE human liver cancer tissue with CD14 antibody. HIER: boil tissue sections in pH8 EDTA for 20 min and allow to cool before testing.



Western blot testing of human 1) ThP-1 and 2) Raji cell lysate with CD14 antibody. Expected molecular weight 40-55 kDa depending on glycosylation level.

Description

CD14 is a single-copy gene encoding 2 protein forms: a 50- to 55-kD glycosylphosphatidylinositol-anchored membrane protein (mCD14) and a monocyte or liver-derived soluble serum protein (sCD14) that lacks the anchor. This gene is located at bands 5q23-q31. The protein encoded by this gene is a surface antigen that is preferentially expressed on monocytes/macrophages. CD14 acts as a co-receptor (along with the Toll-like receptor TLR 4 and MD-2) for the detection of bacterial lipopolysaccharide (LPS). CD14 can bind LPS only in the presence of lipopolysaccharide-binding protein (LBP). Although LPS is considered its main ligand, CD14 also recognizes other pathogen-associated molecular patterns.

Application Notes

Optimal dilution of the CD14 antibody should be determined by the researcher.

Immunogen

Amino acids 65-327 of human CD14 were used as the immunogen for the CD14 antibody.

Storage

After reconstitution, the CD14 antibody can be stored for up to one month at 4°C. For long-term, aliquot and store at -20°C. Avoid repeated freezing and thawing.