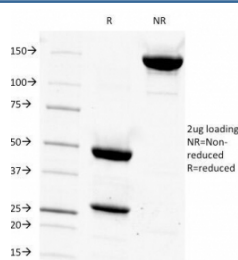


## CD14 Antibody / Macrophage Marker [clone LPSR/927] (V2417)

Catalog No.	Formulation	Size
V2417-100UG	0.2 mg/ml in 1X PBS with 0.1 mg/ml BSA (US sourced) and 0.05% sodium azide	100 ug
V2417-20UG	0.2 mg/ml in 1X PBS with 0.1 mg/ml BSA (US sourced) and 0.05% sodium azide	20
V2417SAF-100UG	1 mg/ml in 1X PBS; BSA free, sodium azide free	100

[Bulk quote request](#)

<b>Availability</b>	1-3 business days
<b>Species Reactivity</b>	Human
<b>Format</b>	Purified
<b>Clonality</b>	Monoclonal (mouse origin)
<b>Isotype</b>	Mouse IgG1, kappa
<b>Clone Name</b>	LPSR/927
<b>Purity</b>	Protein G affinity chromatography
<b>Buffer</b>	1X PBS, pH 7.4
<b>UniProt</b>	P08571
<b>Localization</b>	Cell surface, Secreted, Cytoplasmic (Golgi)
<b>Applications</b>	Flow Cytometry : 1-2ug/10 <sup>6</sup> cells Immunofluorescence : 1-2ug/ml
<b>Limitations</b>	This CD14 antibody is available for research use only.



SDS-PAGE Analysis of Purified, BSA-Free CD14 Antibody (clone LPSR/927).  
Confirmation of Integrity and Purity of the Antibody.

## Description

Recognizes a protein of 55kDa, identified as Cluster of Differentiation 14 (also known lipopolysaccharide receptor or LPSR). CD14 is expressed strongly on monocytes and macrophage and weakly on the surface of neutrophils. It is anchored to cells by linkage to glycosylphosphatidylinositol (GPI) and functions as a high affinity receptor for complexes of LPS and LPS binding protein (LBP). Soluble CD14, also binding to LPS, acts at physiological concentration as an LPS agonist and has, at higher concentrations, an LPS antagonizing effect in cell activation.

## Application Notes

Variations in protocols, secondaries and substrates may require the CD14 antibody to be titrated up or down for optimal performance.

## Immunogen

Human CD14 recombinant protein was used as immunogen for this CD14 antibody.

## Storage

CD14 antibody with azide can be stored at 2-8°C. The azide-free format should be aliquoted and stored at -20°C or colder.