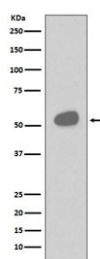


CD14 Antibody [clone FID-3] (RQ5241)

Catalog No.	Formulation	Size
RQ5241	Antibody in PBS with 0.02% sodium azide, 50% glycerol and 0.4-0.5mg/ml BSA	100 ul

[Bulk quote request](#)

Availability	1-2 weeks
Species Reactivity	Human
Format	Purified
Host	Rabbit
Clonality	Rabbit Monoclonal
Isotype	Rabbit IgG
Clone Name	FID-3
Purity	Affinity purified
UniProt	P08571
Applications	Western Blot : 1:500-1:2000
Limitations	This CD14 antibody is available for research use only.



Western blot testing of human tonsil lysate with CD14 antibody. Expected molecular weight 40-55 kDa depending on glycosylation level.

Description

CD14 is expressed strongly on monocytes and macrophage and weakly on the surface of neutrophils. It is anchored to cells by linkage to glycosylphosphatidylinositol (GPI) and functions as a high affinity receptor for complexes of LPS and LPS binding protein (LBP).

Application Notes

Optimal dilution of the CD14 antibody should be determined by the researcher.

Immunogen

A synthetic peptide specific to human CD14 was used as the immunogen for the CD14 antibody.

Storage

Store the CD14 antibody at -20oC.