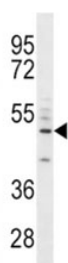


CD14 Antibody (F49569)

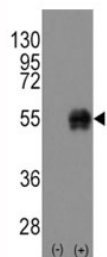
Catalog No.	Formulation	Size
F49569-0.4ML	In 1X PBS, pH 7.4, with 0.09% sodium azide	0.4 ml
F49569-0.08ML	In 1X PBS, pH 7.4, with 0.09% sodium azide	0.08 ml

[Bulk quote request](#)

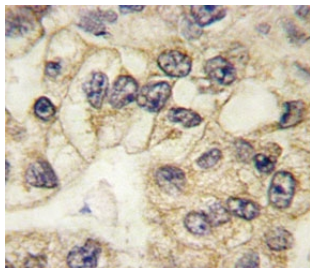
Availability	1-3 business days
Species Reactivity	Human
Format	Purified
Host	Rabbit
Clonality	Polyclonal (rabbit origin)
Isotype	Rabbit Ig
Purity	Purified
UniProt	P08571
Localization	Cell surface, Secreted, Cytoplasmic (Golgi)
Applications	Western Blot : 1:1000 IHC (Paraffin) : 1:10-1:50 Flow Cytometry : 1:10-1:50
Limitations	This CD14 antibody is available for research use only.



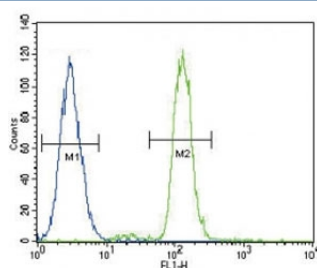
CD14 antibody western blot analysis in A549 lysate. Predicted size 40-55 kDa depending on glycosylation level



Western blot analysis of CD14 antibody and untransfected/transfected 293 cell lysate



CD14 antibody used to stain FFPE human lung carcinoma



CD14 antibody flow cytometric analysis of A549 cells (green) compared to a negative control (blue).

Description

In concert with LBP, CD14 binds to monomeric lipopolysaccharide and delivers it to the MD-2/TLR4 complex, thereby mediating the innate immune response to bacterial lipopolysaccharide (LPS). Acts via MyD88, TIRAP and TRAF6, leading to NF-kappa-B activation, cytokine secretion and the inflammatory response. Up-regulates cell surface molecules, including adhesion molecules. [UniProt]

Application Notes

The stated application concentrations are suggested starting amounts. Titration of the CD14 antibody may be required due to differences in protocols and secondary/substrate sensitivity.

Immunogen

A portion of amino acids 292-322 from the human protein was used as the immunogen for this CD14 antibody.

Storage

Store at 4°C for up to one month. For long term, aliquot the CD14 antibody and store frozen at -20°C or colder. Avoid repeated freeze-thaw cycles.

