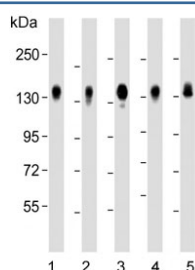


## CD130 Antibody / IL6ST / Interleukin 6 Receptor subunit beta (F54230)

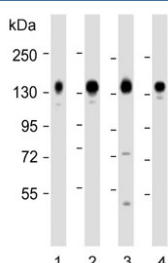
Catalog No.	Formulation	Size
F54230-0.4ML	In 1X PBS, pH 7.4, with 0.09% sodium azide	0.4 ml
F54230-0.08ML	In 1X PBS, pH 7.4, with 0.09% sodium azide	0.08 ml

[Bulk quote request](#)

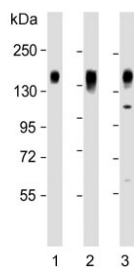
<b>Availability</b>	1-3 business days
<b>Species Reactivity</b>	Human
<b>Format</b>	Purified
<b>Host</b>	Rabbit
<b>Clonality</b>	Polyclonal (rabbit origin)
<b>Isotype</b>	Rabbit Ig
<b>Purity</b>	Antigen affinity purified
<b>UniProt</b>	P40189
<b>Gene ID</b>	3572
<b>Applications</b>	Western Blot : 1:1000-1:2000 Immunohistochemistry (FFPE) : 1:25
<b>Limitations</b>	This CD130 antibody is available for research use only.



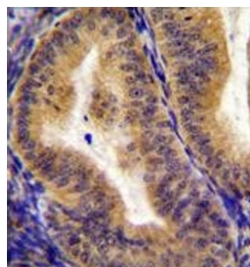
Western blot testing of human 1) HeLa, 2) MDA-MB-231, 3) HepG2, 4) SW480 and 5) A549 cell lysate with CD130 antibody. Expected molecular weight: 104-140 kDa depending on glycosylation level.



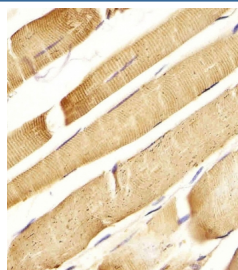
Western blot testing of human 1) A549, 2) HeLa, 3) HepG2 and 4) HT-1080 cell lysate with CD130 antibody. Expected molecular weight: 104-140 kDa depending on glycosylation level.



Western blot testing of human 1) HepG2, 2) MDA-MB-231 and 3) SW480 cell lysate with CD130 antibody. Expected molecular weight: 104-140 kDa depending on glycosylation level.



IHC testing of FFPE human uterus tissue with CD130 antibody. HIER: steam section in pH6 citrate buffer for 20 min and allow to cool prior to staining.



IHC testing of FFPE human skeletal muscle tissue with CD130 antibody. HIER: steam section in pH6 citrate buffer for 20 min and allow to cool prior to staining.

## Description

The protein encoded by this gene is a signal transducer shared by many cytokines, including interleukin 6 (IL6), ciliary neurotrophic factor (CNTF), leukemia inhibitory factor (LIF), and oncostatin M (OSM). This protein functions as a part of the cytokine receptor complex. The activation of this protein is dependent upon the binding of cytokines to their receptors. vIL6, a protein related to IL6 and encoded by the Kaposi sarcoma-associated herpesvirus, can bypass the interleukin 6 receptor (IL6R) and directly activate this protein. Knockout studies in mice suggest that this gene plays a critical role in regulating myocyte apoptosis. Alternatively spliced transcript variants encoding distinct isoforms have been described. A related pseudogene has been identified on chromosome 17.

## Application Notes

The stated application concentrations are suggested starting points. Titration of the CD130 antibody may be required due to differences in protocols and secondary/substrate sensitivity.

## Immunogen

A portion of amino acids 871-899 from the human protein were used as the immunogen for the CD130 antibody.

## Storage

Aliquot the CD130 antibody and store frozen at -20oC or colder. Avoid repeated freeze-thaw cycles.

