

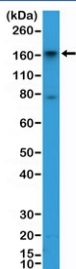
CD13 Antibody [clone RM403] (R20419)

Catalog No.	Formulation	Size
R20419-0.1ML	Antibody in PBS with 50% glycerol, 1% BSA and 0.09% sodium azide	100 ul

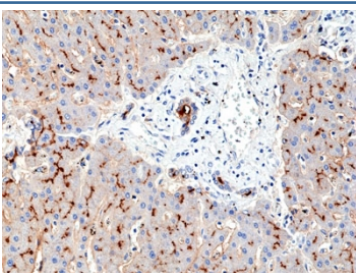
Recombinant **RABBIT MONOCLONAL**

[Bulk quote request](#)

Availability	1-3 business days
Species Reactivity	Human
Format	Purified
Host	Rabbit
Clonality	Recombinant Rabbit Monoclonal
Isotype	Rabbit IgG
Clone Name	RM403
Purity	Protein A purified from animal origin-free supernatant
UniProt	P15144
Applications	Immunohistochemistry (FFPE) : 1:100-1:200 Western Blot : 1:1000-1:2000
Limitations	This recombinant CD13 antibody is available for research use only.



Western blot testing of human HepG2 cell lysate with recombinant CD13 antibody at 1:2000 dilution. Expected molecular weight: 110-150 kDa depending on glycosylation level.



IHC staining of FFPE human liver tissue with recombinant CD13 antibody at 1:200.

Description

This antibody reacts to human to CD13.

Application Notes

The stated application concentrations are suggested starting points. Titration of the recombinant CD13 antibody may be required due to differences in protocols and secondary/substrate sensitivity.

Immunogen

A peptide corresponding to residues near the C-terminus of human CD13 was used as the immunogen for the recombinant CD13 antibody.

Storage

Store the recombinant CD13 antibody at -20°C.