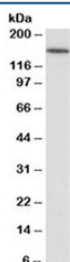


## CD13 Antibody (R35348)

Catalog No.	Formulation	Size
R35348-100UG	0.5 mg/ml in 1X TBS, pH7.3, with 0.5% BSA (US sourced) and 0.02% sodium azide	100 ug

[Bulk quote request](#)

Availability	1-3 business days
Species Reactivity	Human
Format	Antigen affinity purified
Host	Goat
Clonality	Polyclonal (goat origin)
Isotype	Goat Ig
Purity	Antigen affinity
Gene ID	290
Applications	Western Blot : 0.03-0.1ug/ml ELISA (peptide) LOD : 1:128000
Limitations	This CD13 antibody is available for research use only.



Western blot testing of human kidney lysate with CD13 antibody at 0.03ug/ml. Predicted molecular weight of ~110kDa but routinely observed at ~150kDa due to glycosylation.

## Description

Additional name(s) for this target protein: Alanyl aminopeptidase; ANPEP

## Application Notes

Optimal dilution of the CD13 antibody should be determined by the researcher.

## Immunogen

Amino acids QLEQFKKDNEET were used as the immunogen for this CD13 antibody.

## **Storage**

Aliquot and store the CD13 antibody at -20oC.