

CD11c Antibody [clone HC1/1] (V2162)

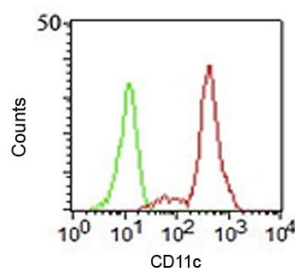
Catalog No.	Formulation	Size
V2162-100UG	0.2 mg/ml in 1X PBS with 0.1 mg/ml BSA (US sourced) and 0.05% sodium azide	100 ug
V2162-20UG	0.2 mg/ml in 1X PBS with 0.1 mg/ml BSA (US sourced) and 0.05% sodium azide	20 ug
V2162SAF-100UG	1 mg/ml in 1X PBS; BSA free, sodium azide free	100 ug



Citations (6)

[Bulk quote request](#)

Species Reactivity	Human
Format	Purified
Host	Mouse
Clonality	Monoclonal (mouse origin)
Isotype	Mouse IgG1, kappa
Clone Name	HC1/1
Purity	Protein G affinity chromatography
Buffer	1X PBS, pH 7.4
Gene ID	3687
Localization	Cell surface, cytoplasmic
Applications	Flow Cytometry : 0.5-1ug/10 ⁶ cells Immunofluorescence : 0.5-1ug/ml Functional Studies (order BSA/sodium Azide-free Format) :
Limitations	This CD11c antibody is available for research use only.



FACS staining of human PBMCs using CD11c antibody (HC1/1).

Description

CD11c, also known as Integrin alpha X (complement component 3 receptor 4 subunit) (ITGAX), is a type I transmembrane protein found at high levels on most human dendritic cells, but also on monocytes, macrophages, neutrophils, and some B cells that induces cellular activation and helps trigger neutrophil respiratory burst; expressed in hairy cell leukemias, acute non-lymphocytic leukemias, and some B-cell chronic lymphocytic leukemias.

Application Notes

The concentration stated for each application is a general starting point. Variations in protocols, secondaries and substrates may require the CD11c antibody to be titrated up or down for optimal performance.

Immunogen

Human monocytic U937 phorbol ester-treated cells were used as the immunogen for this CD11c antibody.

Storage

Store the CD11c antibody at 2-8oC (with azide) or aliquot and store at -20oC or colder (without azide).

References (2)