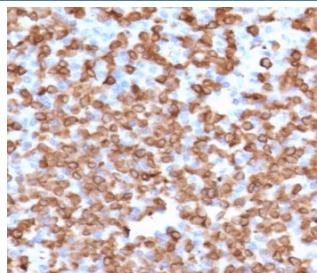


CD11b Antibody / MAC-1 [clone CDLA11b-1] (V8135)

Catalog No.	Formulation	Size
V8135-100UG	0.2 mg/ml in 1X PBS with 0.1 mg/ml BSA (US sourced) and 0.05% sodium azide	100 ug
V8135-20UG	0.2 mg/ml in 1X PBS with 0.1 mg/ml BSA (US sourced), 0.05% sodium azide	20 ug
V8135SAF-100UG	1 mg/ml in 1X PBS; BSA free, sodium azide free	100 ug

[Bulk quote request](#)

Availability	1-3 business days
Species Reactivity	Human
Format	Purified
Host	Mouse
Clonality	Monoclonal (mouse origin)
Isotype	Mouse IgG1, kappa
Clone Name	CDLA11b-1
Purity	Protein G affinity chromatography
UniProt	P11215
Localization	Cell membrane, cytoplasm
Applications	Western Blot : 1-2ug/ml Immunohistochemistry (FFPE) : 1-2ug/ml
Limitations	This CD11b antibody is available for research use only.



IHC staining of FFPE human spleen with CD11b antibody (clone CDLA11b-1). HIER: boil tissue sections in pH 9 10mM Tris with 1mM EDTA for 20 min and allow to cool before testing.

Description

Integrin ITGAM/ITGB2/CD11b/MAC-1 is implicated in various adhesive interactions of monocytes, macrophages and granulocytes as well as in mediating the uptake of complement-coated particles and pathogens. [UniProt]

Application Notes

The stated application concentrations are suggested starting points. Titration of the CD11b antibody may be required due to differences in protocols and secondary/substrate sensitivity.

Immunogen

Amino acids 941-1074 were used as the immunogen for this CD11b antibody.

Storage

Store the CD11b antibody at 2-8oC (with azide) or aliquot and store at -20oC or colder (without azide).