

CD11a Antibody / LFA-1 [clone DF1524] (V2642)

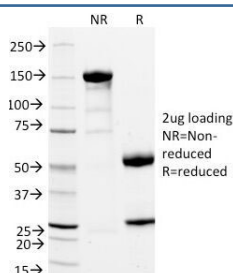
Catalog No.	Formulation	Size
V2642-100UG	0.2 mg/ml in 1X PBS with 0.1 mg/ml BSA (US sourced) and 0.05% sodium azide	100 ug
V2642-20UG	0.2 mg/ml in 1X PBS with 0.1 mg/ml BSA (US sourced) and 0.05% sodium azide	20 ug
V2642SAF-100UG	1 mg/ml in 1X PBS; BSA free, sodium azide free	100 ug



Citations (6)

[Bulk quote request](#)

Availability	1-3 business days
Species Reactivity	Human
Format	Purified
Host	Mouse
Clonality	Monoclonal (mouse origin)
Isotype	Mouse IgG2b, kappa
Clone Name	DF1524
Purity	Protein G affinity chromatography
UniProt	P20701
Localization	Cell surface
Applications	Flow Cytometry : 1-2ug/10 ⁶ cells Immunofluorescence : 1-2ug/ml Functional Studies (order BSA/sodium Azide-free Format) :
Limitations	This CD11a antibody is available for research use only.



SDS-PAGE Analysis of Purified, BSA-Free CD11a Antibody (clone DF1524).
Confirmation of Integrity and Purity of the Antibody.

Description

Recognizes a protein of 180 kDa, identified as CD11a (Leucocyte Workshop IV; Code 1524). CD11a complex with the beta 2 subunit of the integrin family, CD18, to form the cell surface heterodimer, LFA-1 or CD11a /C18 (aLbL). LFA-1 is expressed on all leukocytes including lymphocytes, monocytes, and granulocytes. It is involved in leukocyte adhesion to its ligands including intercellular adhesion molecule-1 (ICAM-1 or CD54), ICAM-2 (CD102), ICAM-3 (CD50) and Telencephalin (TLN) and play a role in most immune/inflammatory responses. This mAb potently blocks LFA-1 dependent homotypic cell aggregation.

Application Notes

Optimal dilution of the CD11a antibody should be determined by the researcher.

Immunogen

Human CD11a protein was used as the immunogen for the CD11a antibody.

Storage

Store the CD11a antibody at 2-8oC (with azide) or aliquot and store at -20oC or colder (without azide).