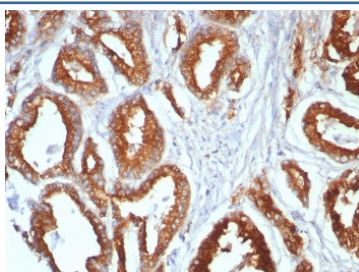


## CD107a Antibody / LAMP1 [clone LAMP1/7456] (V4331)

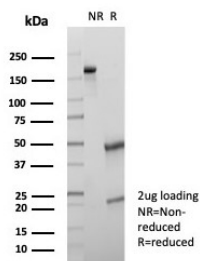
Catalog No.	Formulation	Size
V4331-100UG	0.2 mg/ml in 1X PBS with 0.1 mg/ml BSA (US sourced), 0.05% sodium azide	100 ug
V4331-20UG	0.2 mg/ml in 1X PBS with 0.1 mg/ml BSA (US sourced), 0.05% sodium azide	20 ug
V4331SAF-100UG	1 mg/ml in 1X PBS; BSA free, sodium azide free	100 ug

[Bulk quote request](#)

<b>Availability</b>	1-3 business days
<b>Species Reactivity</b>	Human
<b>Format</b>	Purified
<b>Clonality</b>	Monoclonal (mouse origin)
<b>Isotype</b>	Mouse IgG1, kappa
<b>Clone Name</b>	LAMP1/7456
<b>Purity</b>	Protein A/G affinity
<b>UniProt</b>	P11279
<b>Localization</b>	Cytoplasm, Cell membrane
<b>Applications</b>	Immunohistochemistry (FFPE) : 1-2ug/ml for 30 minutes at RT
<b>Limitations</b>	This CD107a antibody is available for research use only.



IHC staining of FFPE human prostate tissue with CD107a antibody (clone LAMP1/7456).  
 HIER: boil tissue sections in pH 9 10mM Tris with 1mM EDTA for 20 min and allow to cool before testing.



SDS-PAGE analysis of purified, BSA-free CD107a antibody (clone LAMP1/7456) as confirmation of integrity and purity.

## Description

Lysosome-associated membrane proteins (LAMP) are glycosylated type I membrane proteins that play a role in the biogenesis of the pigment melanin. LAMP-1 (also designated CD107a) and LAMP-2 (also designated CD107b) are involved in a variety of functions, including cellular adhesion, and are thought to participate in the process of tumor invasion and metastasis. Newly synthesized LAMP-1 and LAMP-2 proteins are sorted at the trans-Golgi network and are transported intracellularly via a pathway that is distinct from the Clathrincoated vesicles used for the mannose-6 phosphate receptor. LAMP-1 is expressed on the surface of Thrombin-activated but not resting platelets, and it is thought to be involved in the adhesive, prothrombic properties of these cells. Both LAMP-1 and LAMP-2 are involved in maintaining lysosome acidity and protecting the lysosomal membranes from autodigestion, and their expression is increased in patients with lysosomal storage disorders.

## Application Notes

Optimal dilution of the CD107a antibody should be determined by the researcher.

## Immunogen

A recombinant partial protein sequence (within amino acids 200-400) from the human protein was used as the immunogen for the CD107a antibody.

## Storage

Aliquot the CD107a antibody and store frozen at -20oC or colder. Avoid repeated freeze-thaw cycles.