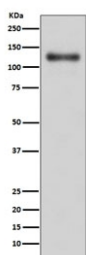


## CD107A Antibody / LAMP1 [clone IIB-12] (RQ5358)

Catalog No.	Formulation	Size
RQ5358	Antibody in PBS with 0.02% sodium azide, 50% glycerol and 0.4-0.5mg/ml BSA	100 ul

[Bulk quote request](#)

Availability	1-2 weeks
Species Reactivity	Human
Format	Purified
Clonality	Rabbit Monoclonal
Isotype	Rabbit IgG
Clone Name	IIB-12
Purity	Affinity purified
UniProt	P11279
Applications	Western Blot : 1:500-1:2000
Limitations	This LAMP1 antibody is available for research use only.



Western blot testing of human A431 cell lysate with LAMP1 antibody. This heavily glycosylated protein of 417 amino acids is visualized at up to 140 kDa.

### Description

The protein encoded by the LAMP1 gene is a member of a family of membrane glycoproteins. This glycoprotein provides selectins with carbohydrate ligands. It may also play a role in tumor cell metastasis. [RefSeq]

### Application Notes

Optimal dilution of the LAMP1 antibody should be determined by the researcher.

### Immunogen

A synthetic peptide specific to human LAMP1 / CD107A was used as the immunogen for the LAMP1 antibody.

## **Storage**

Store the LAMP1 antibody at -20oC.