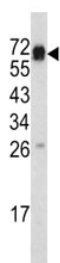


## CD105 Antibody / Endoglin (F48291)

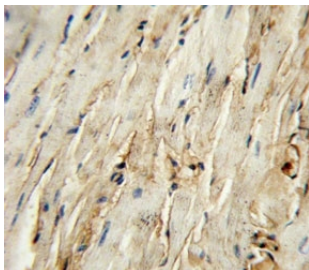
Catalog No.	Formulation	Size
F48291-0.4ML	In 1X PBS, pH 7.4, with 0.09% sodium azide	0.4 ml
F48291-0.08ML	In 1X PBS, pH 7.4, with 0.09% sodium azide	0.08 ml

[Bulk quote request](#)

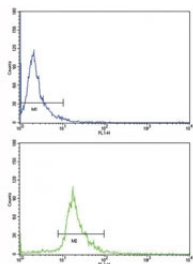
<b>Availability</b>	1-3 business days
<b>Species Reactivity</b>	Human, Mouse
<b>Format</b>	Purified
<b>Host</b>	Rabbit
<b>Clonality</b>	Polyclonal (rabbit origin)
<b>Isotype</b>	Rabbit Ig
<b>Purity</b>	Purified
<b>UniProt</b>	P17813
<b>Localization</b>	Cell surface, cytoplasmic
<b>Applications</b>	Western Blot : 1:1000 IHC (Paraffin) : 1:10-1:50 Flow Cytometry : 1:10-1:50
<b>Limitations</b>	This CD105 antibody is available for research use only.



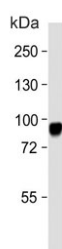
Western blot analysis of CD105 antibody and mouse heart tissue lysate. Observed molecular weight: 70/90 kDa (monomer, unmodified/glycosylated); 140-180 kDa (dimer, unmodified/glycosylated).



CD105 antibody immunohistochemistry analysis in formalin fixed and paraffin embedded mouse heart tissue.



Flow cytometric analysis of NCI-H292 cells using CD105 antibody (bottom histogram) compared to a negative control (top histogram). FITC-conjugated goat-anti-rabbit secondary Ab was used for the analysis.



Western blot analysis of CD105 antibody and human HeLa cell lysate. Observed molecular weight: 70/90 kDa (monomer, unmodified/glycosylated); 140-180 kDa (dimer, unmodified/glycosylated).

## Description

CD105 is a homodimeric transmembrane protein which is a major glycoprotein of the vascular endothelium. This protein is a component of the transforming growth factor beta receptor complex and it binds TGFB1 and TGFB3 with high affinity. Mutations in its gene cause hereditary hemorrhagic telangiectasia, also known as Osler-Rendu-Weber syndrome 1, an autosomal dominant multisystemic vascular dysplasia.

## Application Notes

Titration of the CD105 antibody may be required due to differences in protocols and secondary/substrate sensitivity.

## Immunogen

A portion of amino acids 380-409 from the human protein was used as the immunogen for this CD105 antibody.

## Storage

Aliquot the CD105 antibody and store frozen at -20°C or colder. Avoid repeated freeze-thaw cycles.

