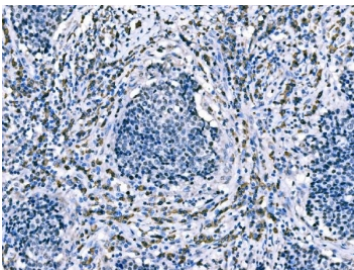


## CD101 Antibody (RQ7013)

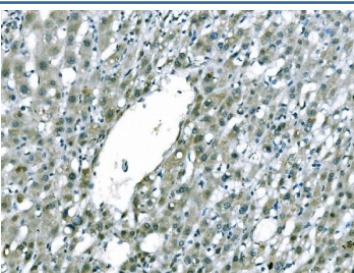
Catalog No.	Formulation	Size
RQ7013	0.5mg/ml if reconstituted with 0.2ml sterile DI water	100 ug

### Bulk quote request

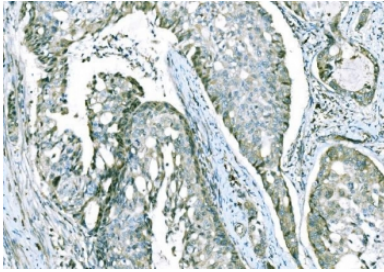
<b>Availability</b>	1-3 business days
<b>Species Reactivity</b>	Human
<b>Format</b>	Antigen affinity purified
<b>Host</b>	Rabbit
<b>Clonality</b>	Polyclonal (rabbit origin)
<b>Isotype</b>	Rabbit IgG
<b>Purity</b>	Antigen affinity purified
<b>Buffer</b>	Lyophilized from 1X PBS with 2% Trehalose
<b>UniProt</b>	Q93033
<b>Applications</b>	Immunohistochemistry (FFPE) : 2-5ug/ml Direct ELISA : 0.1-0.5ug/ml
<b>Limitations</b>	This CD101 antibody is available for research use only.



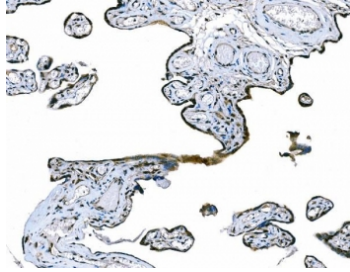
IHC staining of FFPE human lung cancer tissue with CD101 antibody. HIER: boil tissue sections in pH8 EDTA for 20 min and allow to cool before testing.



IHC staining of FFPE human liver cancer tissue with CD101 antibody. HIER: boil tissue sections in pH8 EDTA for 20 min and allow to cool before testing.



IHC staining of FFPE human adenocarcinoma of the right colon tissue with CD101 antibody. HIER: boil tissue sections in pH8 EDTA for 20 min and allow to cool before testing.



IHC staining of FFPE human placental tissue with CD101 antibody. HIER: boil tissue sections in pH8 EDTA for 20 min and allow to cool before testing.

## Description

Immunoglobulin superfamily, member 2 (IGSF2) also known as CD101 (Cluster of Differentiation 101), is a human gene. Predicted to enable hydrolase activity, acting on carbon-nitrogen (but not peptide) bonds, in cyclic amides. Predicted to be involved in cell surface receptor signaling pathway. Predicted to act upstream of or within positive regulation of myeloid leukocyte differentiation. Located in extracellular exosome.

## Application Notes

Optimal dilution of the CD101 antibody should be determined by the researcher.

## Immunogen

Recombinant human protein (amino acids E53-A904) was used as the immunogen for the CD101 antibody.

## Storage

After reconstitution, the CD101 antibody can be stored for up to one month at 4°C. For long-term, aliquot and store at -20°C. Avoid repeated freezing and thawing.