

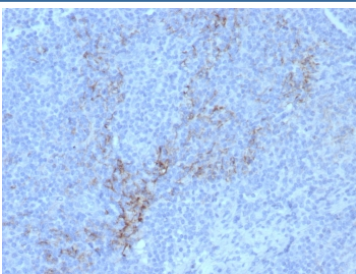
## CD10 Antibody [clone rMME/8584] (V5013)

Catalog No.	Formulation	Size
V5013-100UG	0.2 mg/ml in 1X PBS with 0.1 mg/ml BSA (US sourced), 0.05% sodium azide	100 ug
V5013-20UG	0.2 mg/ml in 1X PBS with 0.1 mg/ml BSA (US sourced), 0.05% sodium azide	20 ug
V5013SAF-100UG	1 mg/ml in 1X PBS; BSA free, sodium azide free	100 ug

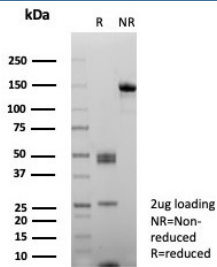
Recombinant **MOUSE MONOCLONAL**

[Bulk quote request](#)

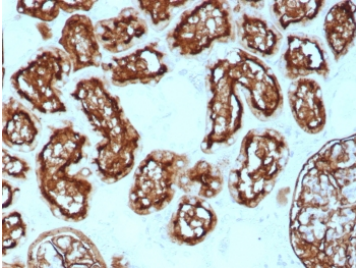
<b>Availability</b>	1-3 business days
<b>Species Reactivity</b>	Human
<b>Format</b>	Purified
<b>Host</b>	Mouse
<b>Clonality</b>	Recombinant Mouse Monoclonal
<b>Isotype</b>	Mouse IgG1, kappa
<b>Clone Name</b>	rMME/8584
<b>Purity</b>	Protein A/G affinity
<b>UniProt</b>	P08473
<b>Localization</b>	Cell surface, Cytoplasm
<b>Applications</b>	Immunohistochemistry (FFPE) : 1-2ug/ml for 30 min at RT
<b>Limitations</b>	This CD10 antibody is available for research use only.



IHC staining of FFPE human lymph node tissue with CD10 antibody (clone rMME/8584).  
HIER: boil tissue sections in pH 9 10mM Tris with 1mM EDTA for 20 min and allow to cool before testing.



SDS-PAGE analysis of purified, BSA-free CD10 antibody (clone rMME/8584) as confirmation of integrity and purity.



IHC staining of FFPE human kidney tissue with CD10 antibody (clone rMME/8584).  
HIER: boil tissue sections in pH 9 10mM Tris with 1mM EDTA for 20 min and allow to cool before testing.

## Description

Recognizes a 100kDa glycoprotein, identified as CD10, also known as Common Acute Lymphocytic Leukemia Antigen (CALLA). It is a cell surface enzyme with neutral metalloendopeptidase activity, which inactivates a variety of biologically active peptides. CD10 is expressed on the cells of lymphoblastic, Burkitt's, and follicular germinal center lymphomas, and on cells from patients with chronic myelocytic leukemia (CML). It is also expressed on the surface of normal early lymphoid progenitor cells, immature B cells within adult bone marrow and germinal center B cells within lymphoid tissue. CD10 is also present on breast myoepithelial cells, bile canaliculi, fibroblasts, with especially high expression on the brush border of kidney and gut epithelial cells.

## Application Notes

Optimal dilution of the CD10 antibody should be determined by the researcher.

## Immunogen

A recombinant human CD10 protein fragment (within amino acids 54-181) was used as the immunogen for the CD10 antibody.

## Storage

Aliquot the CD10 antibody and store frozen at -20°C or colder. Avoid repeated freeze-thaw cycles.