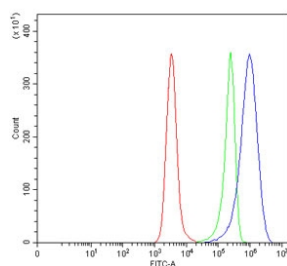


CD10 Antibody / Neprilysin (R31488)

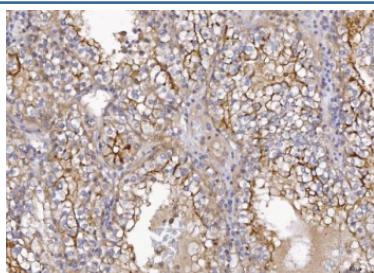
Catalog No.	Formulation	Size
R31488	0.5mg/ml if reconstituted with 0.2ml sterile DI water	100 ug

Bulk quote request

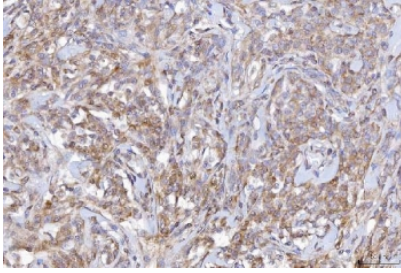
Availability	1-3 business days
Species Reactivity	Human, Rat
Format	Antigen affinity purified
Clonality	Polyclonal (rabbit origin)
Isotype	Rabbit IgG
Purity	Antigen affinity
Buffer	Lyophilized from 1X PBS with 2% Trehalose
Gene ID	4311
Localization	Cell surface, Cytoplasmic
Applications	Western Blot : 0.5-1ug/ml Immunohistochemistry (FFPE) : 2-5ug/ml Flow Cytometry : 1-3ug/million cells
Limitations	This CD10 antibody is available for research use only.



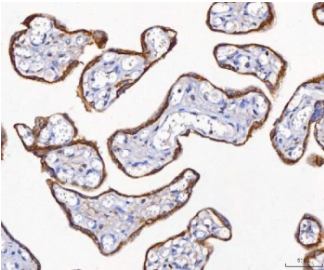
Flow cytometry testing of human Daudi cells with CD10 antibody at 1ug/million cells (blocked with goat sera); Red=cells alone, Green=isotype control, Blue= CD10 antibody.



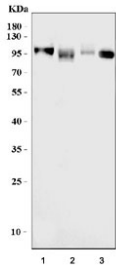
IHC staining of FFPE human renal cell carcinoma tissue with CD10 antibody. HIER: boil tissue sections in pH8 EDTA for 20 min and allow to cool before testing.



IHC staining of FFPE human lymphoma tissue with CD10 antibody. HIER: boil tissue sections in pH8 EDTA for 20 min and allow to cool before testing.



IHC staining of FFPE human placental tissue with CD10 antibody. HIER: boil tissue sections in pH8 EDTA for 20 min and allow to cool before testing.



Western blot testing of 1) human Daudi, 2) human U-87 MG, 3) human placenta and 4) rat kidney lysate with CD10 antibody. Routinely visualized at ~100 kDa.

Description

CD10, also known as membrane metallo-endopeptidase, neutral endopeptidase (NEP), Neprilysin, or common acute lymphoblastic leukemia antigen (CALLA), is a zinc-dependent metalloprotease enzyme that degrades a number of small secreted peptides, most notably the amyloid beta peptide whose abnormal misfolding and aggregation in neural tissue has been implicated as a cause of Alzheimer's disease. This gene is localized to human chromosome 3 by study of somatic cell hybrids and regionalized the location to 3q21-q27 by in situ hybridization. By cDNA transfection analysis, CD10 is confirmed as a functional neutral endopeptidase of the type that has previously been called enkephalinase. CD10 has also been called atriopeptidase. Atriopeptidase specifically degrades atrial natriuretic factor. A specific enzyme inhibitor was developed and reported that it had effects similar to those of low-dose ANF infusion. These effects include diuresis, natriuresis, vasodilatation, and suppression of the renin-angiotensin-aldosterone system.

Application Notes

The stated application concentrations are suggested starting amounts. Titration of the CD10 antibody may be required due to differences in protocols and secondary/substrate sensitivity.

Immunogen

Human partial recombinant protein (AA 52-750) was used as the immunogen for this CD10 antibody.

Storage

After reconstitution, the CD10 antibody can be stored for up to one month at 4°C. For long-term, aliquot and store at -20°C. Avoid repeated freezing and thawing.

