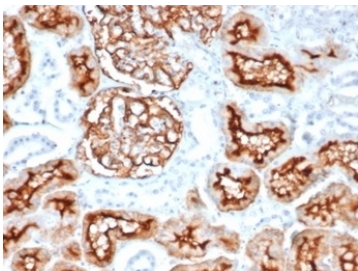


## CD10 Antibody / Neprilysin [clone MME/6714] (V9410)

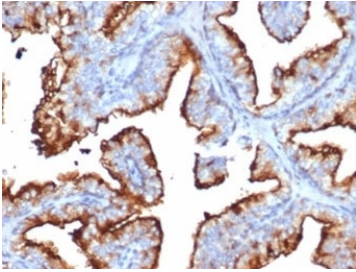
Catalog No.	Formulation	Size
V9410-100UG	0.2 mg/ml in 1X PBS with 0.1 mg/ml BSA (US sourced), 0.05% sodium azide	100 ug
V9410-20UG	0.2 mg/ml in 1X PBS with 0.1 mg/ml BSA (US sourced), 0.05% sodium azide	20 ug
V9410SAF-100UG	1 mg/ml in 1X PBS; BSA free, sodium azide free	100 ug

[Bulk quote request](#)

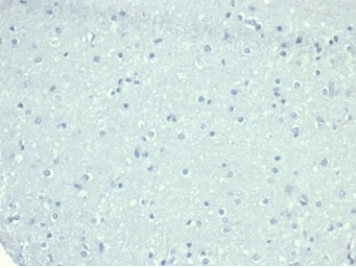
<b>Availability</b>	1-3 business days
<b>Species Reactivity</b>	Human
<b>Format</b>	Purified
<b>Host</b>	Mouse
<b>Clonality</b>	Monoclonal (mouse origin)
<b>Isotype</b>	Mouse IgG2b, kappa
<b>Clone Name</b>	MME/6714
<b>Purity</b>	Protein A/G affinity
<b>UniProt</b>	P08473
<b>Localization</b>	Cell surface, Cytoplasm
<b>Applications</b>	Immunohistochemistry (FFPE) : 1-2ug/ml Western Blot : 2-4ug/ml
<b>Limitations</b>	This CD10 antibody is available for research use only.



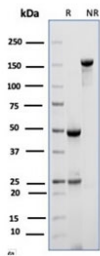
IHC staining of FFPE human kidney tissue with CD10 antibody (clone MME/6714).  
HIER: boil tissue sections in pH 9 10mM Tris with 1mM EDTA for 20 min and allow to cool before testing.



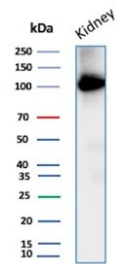
IHC staining of FFPE human prostate tissue with CD10 antibody (clone MME/6714).  
HIER: boil tissue sections in pH 9 10mM Tris with 1mM EDTA for 20 min and allow to cool before testing.



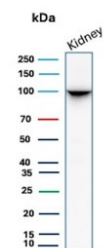
Negative control: IHC staining of FFPE human brain tissue with CD10 antibody (clone MME/6714) at 2ug/ml in PBS for 30min RT. HIER: boil tissue sections in pH 9 10mM Tris with 1mM EDTA for 20 min and allow to cool before testing.



SDS-PAGE analysis of purified, BSA-free CD10 antibody (clone MME/6714) as confirmation of integrity and purity.



Western blot testing of human kidney tissue lysate with CD10 antibody. Routinely visualized at ~100 kDa.



Western blot testing of human kidney tissue lysate with CD10 antibody. Routinely visualized at ~100 kDa.

## Description

Recognizes a 100kDa glycoprotein, identified as CD10, also known as Common Acute Lymphocytic Leukemia Antigen (CALLA). It is a cell surface enzyme with neutral metalloendopeptidase activity, which inactivates a variety of biologically active peptides. CD10 is expressed on the cells of lymphoblastic, Burkitt's, and follicular germinal center lymphomas, and on cells from patients with chronic myelocytic leukemia (CML). It is also expressed on the surface of normal early lymphoid progenitor cells, immature B cells within adult bone marrow and germinal center B cells within lymphoid tissue. CD10 is also present on breast myoepithelial cells, bile canaliculi, fibroblasts, with especially high expression on the brush border of kidney and gut epithelial cells.

## **Application Notes**

Optimal dilution of the CD10 antibody should be determined by the researcher.

## **Immunogen**

A portion of amino acids 54-181 was used as the immunogen for the CD10 antibody.

## **Storage**

Aliquot the CD10 antibody and store frozen at -20oC or colder. Avoid repeated freeze-thaw cycles.