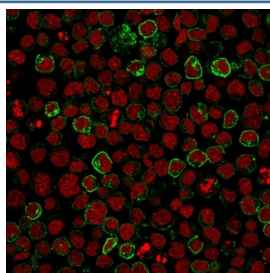


## CD10 Antibody / Neprilysin [clone MME/1620] (V7955)

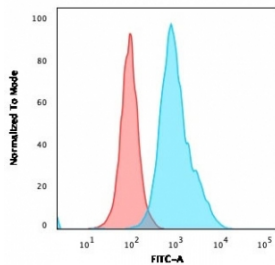
Catalog No.	Formulation	Size
V7955-100UG	0.2 mg/ml in 1X PBS with 0.1 mg/ml BSA (US sourced) and 0.05% sodium azide	100 ug
V7955-20UG	0.2 mg/ml in 1X PBS with 0.1 mg/ml BSA (US sourced) and 0.05% sodium azide	20 ug
V7955SAF-100UG	1 mg/ml in 1X PBS; BSA free, sodium azide free	100 ug

**Bulk quote request**

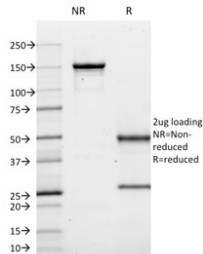
<b>Availability</b>	1-3 business days
<b>Species Reactivity</b>	Human
<b>Format</b>	Purified
<b>Clonality</b>	Monoclonal (mouse origin)
<b>Isotype</b>	Mouse IgG1, kappa
<b>Clone Name</b>	MME/1620
<b>Purity</b>	Protein G affinity chromatography
<b>UniProt</b>	P08473
<b>Localization</b>	Cell surface, cytoplasmic
<b>Applications</b>	Flow Cytometry : 1-2ug/10 <sup>6</sup> cells in 0.1ml Western Blot : 1-2ug/ml Immunofluorescence : 1-2ug/ml
<b>Limitations</b>	This CD10 antibody is available for research use only.



Immunofluorescent staining of human Ramos cells with CD10 antibody (clone MME/1620, green) and Reddot nuclear stain (red).



Flow cytometry testing of human Ramos cells with CD10 antibody (clone MME/1620); Red=isotype control, Blue= CD10 antibody.



SDS-PAGE analysis of purified, BSA-free CD10 antibody (clone MME/1620) as confirmation of integrity and purity.

## Description

Recognizes a 100kDa glycoprotein, identified as CD10, also known as Common Acute Lymphocytic Leukemia Antigen (CALLA). It is a cell surface enzyme with neutral metalloendopeptidase activity, which inactivates a variety of biologically active peptides. CD10 is expressed on the cells of lymphoblastic, Burkitt's, and follicular germinal center lymphomas, and on cells from patients with chronic myelocytic leukemia (CML). It is also expressed on the surface of normal early lymphoid progenitor cells, immature B cells within adult bone marrow and germinal center B cells within lymphoid tissue. CD10 is also present on breast myoepithelial cells, bile canaliculi, fibroblasts, with especially high expression on the brush border of kidney and gut epithelial cells.

## Application Notes

Optimal dilution of the CD10 antibody should be determined by the researcher.

## Immunogen

Full length human protein was used as the immunogen for the CD10 antibody.

## Storage

Store the CD10 antibody at 2-8oC (with azide) or aliquot and store at -20oC or colder (without azide).