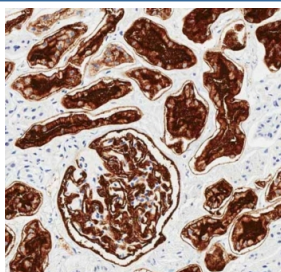


## CD10 Antibody / Neprilysin / MME [clone 965CT9.1.1] (F54497)

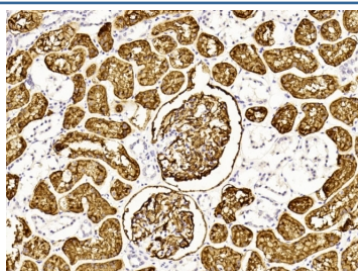
Catalog No.	Formulation	Size
F54497-0.2ML	In 1X PBS, pH 7.4, with 0.09% sodium azide	0.2 ml
F54497-0.05ML	In 1X PBS, pH 7.4, with 0.09% sodium azide	0.05 ml

**Bulk quote request**

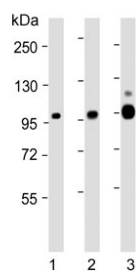
<b>Availability</b>	1-3 business days
<b>Species Reactivity</b>	Human
<b>Format</b>	Purified
<b>Clonality</b>	Monoclonal (mouse origin)
<b>Isotype</b>	IgG1, kappa
<b>Clone Name</b>	965CT9.1.1
<b>Purity</b>	Protein G affinity
<b>UniProt</b>	P08473
<b>Applications</b>	Western Blot : 1:500-1:2000 Flow Cytometry : 1:25 (1x10e6 cells) Immunohistochemistry (FFPE) : 1:25
<b>Limitations</b>	This CD10 antibody is available for research use only.



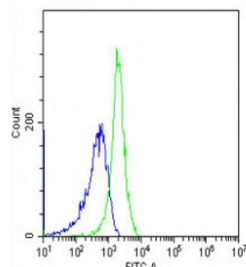
IHC testing of FFPE human kidney tissue with CD10 antibody. HIER: steam section in pH6 citrate buffer for 20 min and allow to cool prior to staining.



IHC testing of FFPE human kidney tissue with CD10 antibody. HIER: steam section in pH6 citrate buffer for 20 min and allow to cool prior to staining.



Western blot testing of human 1) placenta, 2) Ramos and 3) kidney lysate with CD10 antibody. Routinely visualized at ~100 kDa.



Flow cytometry testing of fixed human Jurkat cells with CD10 antibody; Blue=isotype control, Green= CD10 antibody.

## Description

Biologically important in the destruction of opioid peptides such as Met- and Leu-enkephalins by cleavage of a Gly-Phe bond. Able to cleave angiotensin-1, angiotensin-2 and angiotensin 1-9. Involved in the degradation of atrial natriuretic factor (ANF).

## Application Notes

The stated application concentrations are suggested starting points. Titration of the CD10 antibody may be required due to differences in protocols and secondary/substrate sensitivity.

## Immunogen

Recombinant human protein was used as the immunogen for the CD10 antibody.

## Storage

Aliquot the CD10 antibody and store frozen at -20°C or colder. Avoid repeated freeze-thaw cycles.