

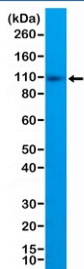
CD10 Antibody / Neprilysin / Cytoplasmic domain [clone RM337] (R20361)

| Catalog No. | Formulation | Size |
|--------------|--|--------|
| R20361-0.1ML | Antibody in PBS with 50% glycerol, 1% BSA and 0.09% sodium azide | 100 ul |

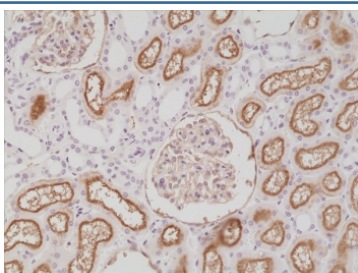
Recombinant **RABBIT MONOCLONAL**

[Bulk quote request](#)

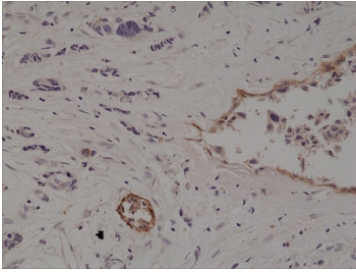
| | |
|---------------------------|---|
| Availability | 1-3 business days |
| Species Reactivity | Human |
| Format | Purified |
| Host | Rabbit |
| Clonality | Recombinant Rabbit Monoclonal |
| Isotype | Rabbit IgG |
| Clone Name | RM337 |
| Purity | Protein A purified from animal origin-free supernatant |
| UniProt | P08473 |
| Applications | Immunohistochemistry (FFPE) : 1:200-1:500 Western Blot : 1:1000-1:2000 |
| Limitations | This recombinant CD10 antibody is available for research use only. |



Western blot testing of human Raji cell lysate with recombinant CD10 antibody at 1:1:000. Routinely visualized at ~100 kDa.



IHC staining of FFPE human kidney tissue with recombinant CD10 antibody at 1:200.



IHC staining of FFPE human breast cancer tissue with recombinant CD10 antibody at 1:200.

Description

This antibody reacts to the cytoplasmic domain of human CD10.

Application Notes

The stated application concentrations are suggested starting points. Titration of the recombinant CD10 antibody may be required due to differences in protocols and secondary/substrate sensitivity.

Immunogen

A peptide corresponding to the N-terminus of human CD10 was used as the immunogen for the recombinant CD10 antibody.

Storage

Store the recombinant CD10 antibody at -20°C.