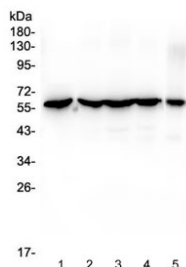


CCT3 Antibody [clone 12H4] (RQ4525)

Catalog No.	Formulation	Size
RQ4525	0.5mg/ml if reconstituted with 0.2ml sterile DI water	100 ug

Bulk quote request

Availability	1-3 business days
Species Reactivity	Human
Format	Purified
Clonality	Monoclonal (mouse origin)
Isotype	Mouse IgG1
Clone Name	12H4
Purity	Protein G affinity
Buffer	Lyophilized from 1X PBS with 2% Trehalose and 0.025% sodium azide
UniProt	P49368
Localization	Cytoplasm
Applications	Western Blot : 0.5-1ug/ml
Limitations	This CCT3 antibody is available for research use only.



Western blot testing of human 1) HeLa, 2) MCF7, 3) COLO-320, 4) HepG2 and 5) HT-1080 cell lysate with CCT3 antibody at 0.5ug/ml. Predicted molecular weight ~61 kDa.

Description

T-complex protein 1 subunit gamma is a protein that in humans is encoded by the CCT3 gene. The protein encoded by this gene is a molecular chaperone that is a member of the chaperonin containing TCP1 complex (CCT), also known as the TCP1 ring complex (TRiC). This complex consists of two identical stacked rings, each containing eight different proteins. Unfolded polypeptides enter the central cavity of the complex and are folded in an ATP-dependent manner. The complex folds various proteins, including actin and tubulin. Alternate transcriptional splice variants have been

characterized for this gene. In addition, a pseudogene of this gene has been found on chromosome 8.

Application Notes

Optimal dilution of the CCT3 antibody should be determined by the researcher.

Immunogen

Amino acids EPLAVKLQTYKTAVETAVLLLRIDDIVSGHKKKGDDQSRQ were used as the immunogen for the CCT3 antibody.

Storage

After reconstitution, the CCT3 antibody can be stored for up to one month at 4oC. For long-term, aliquot and store at -20oC. Avoid repeated freezing and thawing.