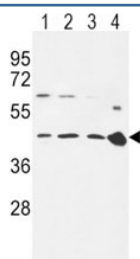


CCR7 Antibody (F48967)

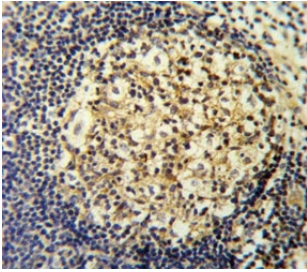
Catalog No.	Formulation	Size
F48967-0.4ML	In 1X PBS, pH 7.4, with 0.09% sodium azide	0.4 ml
F48967-0.08ML	In 1X PBS, pH 7.4, with 0.09% sodium azide	0.08 ml

[Bulk quote request](#)

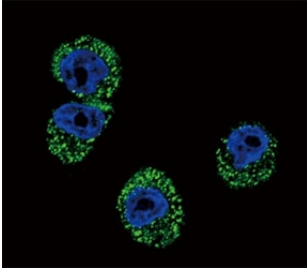
Availability	1-3 business days
Species Reactivity	Human, Mouse
Format	Antigen affinity purified
Host	Rabbit
Clonality	Polyclonal (rabbit origin)
Isotype	Rabbit Ig
Purity	Antigen affinity
UniProt	P32248
Applications	Western Blot : 1:1000 IHC (Paraffin) : 1:10-1:50 Immunofluorescence : 1:10-1:50 Flow Cytometry : 1:10-1:50
Limitations	This CCR7 antibody is available for research use only.



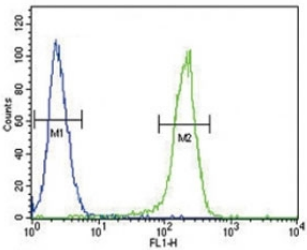
CCR7 antibody western blot analysis in 293 (lane 1), Ramos (2), MDA-MB231 (3) cell line and mouse spleen tissue (4) lysate. Predicted size ~45 kDa



CCR7 antibody IHC analysis in formalin fixed and paraffin embedded human tonsil.



Confocal immunofluorescent analysis of CCR7 antibody with MDA-MB231 cells followed by Alexa Fluor 488-conjugated goat anti-rabbit IgG (green). DAPI was used as a nuclear counterstain (blue).



CCR7 antibody flow cytometric analysis of 293 cells (right histogram) compared to a negative control (left histogram). FITC-conjugated goat-anti-rabbit secondary Ab was used for the analysis.

Description

CCR7 is a member of the G protein-coupled receptor family. This receptor was identified as a gene induced by the Epstein-Barr virus (EBV), and is thought to be a mediator of EBV effects on B lymphocytes. This receptor is expressed in various lymphoid tissues and activates B and T lymphocytes. It has been shown to control the migration of memory T cells to inflamed tissues, as well as stimulate dendritic cell maturation. The chemokine (C-C motif) ligand 19 (CCL19/ECL) has been reported to be a specific ligand of this receptor.

Application Notes

Titration of the CCR7 antibody may be required due to differences in protocols and secondary/substrate sensitivity.

Immunogen

A portion of amino acids 11-37 from the human protein was used as the immunogen for this CCR7 antibody.

Storage

Aliquot the CCR7 antibody and store frozen at -20oC or colder. Avoid repeated freeze-thaw cycles.

