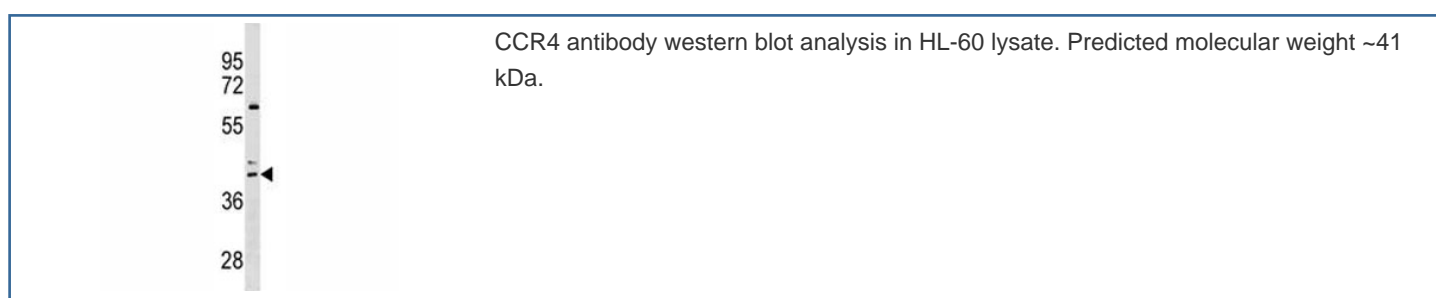


## CCR4 Antibody (F46222)

Catalog No.	Formulation	Size
F46222-0.4ML	In 1X PBS, pH 7.4, with 0.09% sodium azide	0.4 ml
F46222-0.08ML	In 1X PBS, pH 7.4, with 0.09% sodium azide	0.08 ml

**Bulk quote request**

<b>Availability</b>	1-3 business days
<b>Species Reactivity</b>	Human
<b>Format</b>	Antigen affinity purified
<b>Clonality</b>	Polyclonal (rabbit origin)
<b>Isotype</b>	Rabbit Ig
<b>Purity</b>	Antigen affinity
<b>UniProt</b>	P51679
<b>Applications</b>	Western Blot : 1:1000
<b>Limitations</b>	This CCR4 antibody is available for research use only.



## Description

The protein encoded by this gene belongs to the G-protein-coupled receptor family . It is a receptor for the CC chemokine - MIP-1, RANTES, TARC and MCP-1. Chemokines are a group of small polypeptide, structurally related molecules that regulate cell trafficking of various types of leukocytes. The chemokines also play fundamental roles in the development, homeostasis, and function of the immune system, and they have effects on cells of the central nervous system as well as on endothelial cells involved in angiogenesis or angiostasis.

## Application Notes

Titration of the CCR4 antibody may be required due to differences in protocols and secondary/substrate sensitivity.

## Immunogen

A portion of amino acids 262-290 from the human protein was used as the immunogen for this CCR4 antibody.

## Storage

Aliquot the CCR4 antibody and store frozen at -20oC or colder. Avoid repeated freeze-thaw cycles.