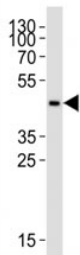


CCR2 Antibody (F52866)

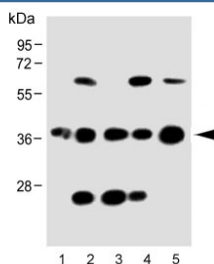
Catalog No.	Formulation	Size
F52866-0.4ML	In 1X PBS, pH 7.4, with 0.09% sodium azide	0.4 ml
F52866-0.08ML	In 1X PBS, pH 7.4, with 0.09% sodium azide	0.08 ml

[Bulk quote request](#)

Availability	1-3 business days
Species Reactivity	Human
Format	Antigen affinity purified
Host	Rabbit
Clonality	Polyclonal (rabbit origin)
Isotype	Rabbit Ig
Purity	Antigen affinity
UniProt	P41597
Applications	Western Blot : 1:1000
Limitations	This CCR2 antibody is available for research use only.



Western blot analysis of lysate from THP-1 cell line using CCR2 antibody at 1:1000.



Western blot testing of human 1) THP-1, 2) HACAT, 3) K562, 4) U266 and 5) brain lysate with CCR2 antibody.

Description

Receptor for the CCL2, CCL7 and CCL13 chemokines. Transduces a signal by increasing intracellular calcium ion levels. Alternative coreceptor with CD4 for HIV-1 infection.

Application Notes

Titration of the CCR2 antibody may be required due to differences in protocols and secondary/substrate sensitivity.

Immunogen

This CCR2 antibody was produced from a rabbit immunized with a KLH conjugated synthetic peptide between 336-369 amino acids from the C-terminal region of human CCR2.

Storage

Aliquot the CCR2 antibody and store frozen at -20oC or colder. Avoid repeated freeze-thaw cycles.