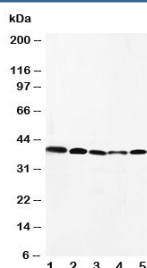


## CCR10 Antibody (R30564)

Catalog No.	Formulation	Size
R30564	0.5mg/ml if reconstituted with 0.2ml sterile DI water	100 ug

**Bulk quote request**

<b>Availability</b>	1-3 business days
<b>Species Reactivity</b>	Human, Mouse, Rat
<b>Format</b>	Antigen affinity purified
<b>Clonality</b>	Polyclonal (rabbit origin)
<b>Isotype</b>	Rabbit IgG
<b>Purity</b>	Antigen affinity
<b>Buffer</b>	Lyophilized from 1X PBS with 2.5% BSA and 0.025% sodium azide/thimerosal
<b>UniProt</b>	P46092
<b>Applications</b>	Western Blot : 0.5-1ug/ml
<b>Limitations</b>	This CCR10 antibody is available for research use only.



Western blot testing of CCR10 antibody and Lane 1: HeLa; 2: SW620; 3: A549; 4: MM231; 5: SMMC-7721 cell lysate. Predicted molecular weight ~38 kDa.

## Description

C-C chemokine receptor type 10 is a protein that in humans is encoded by the CCR10 gene. It is constitutively expressed in skin melanocytes, fibroblasts, and microvascular endothelial cells, and that it is upregulated by IL1B and TNF. Expression was also detected in T cells, Langerhans cells, and peripheral blood mononuclear cells but not in dendritic cells. By fluorescence in situ hybridization, the gene is mapped to 17q21.1-q21.3. CCR10 is the receptor for CCL27. CCR10-CCL27 interactions are involved in T cell-mediated skin inflammation. expression of CCL27 in normal keratinocytes and its strong upregulation in skin lesions of atopic dermatitis, contact dermatitis, and psoriasis patients. CCR10+ T lymphocytes were detected in lesional but not normal skin of these patients. Flow cytometric analysis showed that CCL27 binds extracellular matrix components and dermal microvascular endothelial cells and fibroblasts and

mediates adhesion and transendothelial migration of CCR10+ circulating leukocytes. The protein is predominantly expressed on CD4+CLA+(cutaneous lymphocyte antigen), rather than CD8+, circulating T cells. RT-PCR, confocal microscopy, and ELISA analysis indicated that keratinocytes exposed to TNF or IL1B but not to IL4 or IFNG in vitro express increased CCL27.

## Application Notes

The stated application concentrations are suggested starting amounts. Titration of the CCR10 antibody may be required due to differences in protocols and secondary/substrate sensitivity.

## Immunogen

Amino acids 312-327 (FLGLRFRQDLRRLRG-human) were used as the immunogen for this CCR10 antibody.

## Storage

After reconstitution, the CCR10 antibody can be stored for up to one month at 4oC. For long-term, aliquot and store at -20oC. Avoid repeated freezing and thawing.