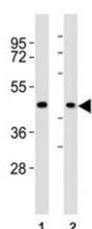


CCR1 Antibody (F53335)

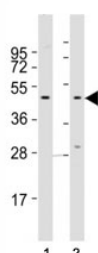
Catalog No.	Formulation	Size
F53335-0.4ML	In 1X PBS, pH 7.4, with 0.09% sodium azide	0.4 ml
F53335-0.08ML	In 1X PBS, pH 7.4, with 0.09% sodium azide	0.08 ml

[Bulk quote request](#)

Availability	1-3 business days
Species Reactivity	Human
Format	Antigen affinity purified
Host	Rabbit
Clonality	Polyclonal (rabbit origin)
Isotype	Rabbit Ig
Purity	Antigen affinity
UniProt	P32246
Localization	Cytoplasmic, membranous
Applications	Western Blot : 1:1000-2000
Limitations	This CCR1 antibody is available for research use only.



Western blot testing of CCR1 antibody at 1:2000 dilution. Lane 1: A375 lysate; 2: human skeletal muscle lysate; Predicted molecular weight: 40-45 kDa.



Western blot testing of CCR1 antibody at 1:2000 dilution. Lane 1: A375 lysate; 2: Jurkat lysate; Predicted molecular weight: 40-45 kDa.

Description

Receptor for a C-C type chemokine. Binds to MIP-1-alpha, MIP-1-delta, RANTES, and MCP-3 and, less efficiently, to MIP-1- beta or MCP-1 and subsequently transduces a signal by increasing the intracellular calcium ions level. Responsible for affecting stem cell proliferation.

Application Notes

Titration of the CCR1 antibody may be required due to differences in protocols and secondary/substrate sensitivity.

Immunogen

This CCR1 antibody was produced from a rabbit immunized with a KLH conjugated synthetic peptide between 13-44 amino acids from the N-terminal region of human CCR1.

Storage

Aliquot the CCR1 antibody and store frozen at -20oC or colder. Avoid repeated freeze-thaw cycles.