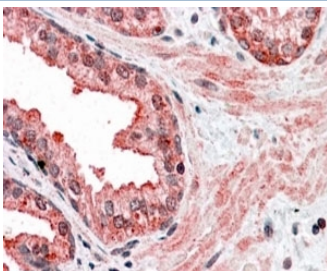


## CCNDBP1 Antibody (R34900)

Catalog No.	Formulation	Size
R34900-100UG	0.5 mg/ml in 1X TBS, pH7.3, with 0.5% BSA (US sourced) and 0.02% sodium azide	100 ug

[Bulk quote request](#)

<b>Availability</b>	1-3 business days
<b>Species Reactivity</b>	Human
<b>Predicted Reactivity</b>	Dog
<b>Format</b>	Antigen affinity purified
<b>Clonality</b>	Polyclonal (goat origin)
<b>Isotype</b>	Goat Ig
<b>Purity</b>	Antigen affinity
<b>Gene ID</b>	23582
<b>Applications</b>	Immunohistochemistry (FFPE) : 3-6ug/ml ELISA (peptide) LOD : 1:32000
<b>Limitations</b>	This CCNDBP1 antibody is available for research use only.



IHC testing of FFPE human prostate with CCNDBP1 at 4ug/ml. HIER: steamed with pH6 citrate buffer, AP-staining.

### Description

Additional name(s) for this target protein: Cyclin D-type binding-protein 1, DIP1, GCIP, MAID; CCNDBP1

### Application Notes

Optimal dilution of the CCNDBP1 antibody should be determined by the researcher.

### Immunogen

Amino acids NRIKELTQSELEL were used as the immunogen for this CCNDBP1 antibody.

## **Storage**

Aliquot and store the CCNDBP1 antibody at -20oC.