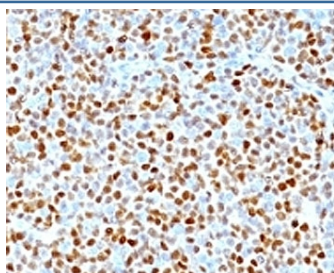


CCND1 Antibody [clone SPM587] (V9073)

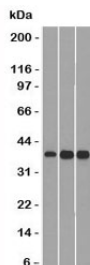
Catalog No.	Formulation	Size
V9073-100UG	0.2 mg/ml in 1X PBS with 0.1 mg/ml BSA (US sourced) and 0.05% sodium azide	100 ug
V9073-20UG	0.2 mg/ml in 1X PBS with 0.1 mg/ml BSA (US sourced) and 0.05% sodium azide	20 ug
V9073SAF-100UG	1 mg/ml in 1X PBS; BSA free, sodium azide free	100 ug
V9073IHC-7ML	Prediluted in 1X PBS with 0.1 mg/ml BSA (US sourced) and 0.05% sodium azide; *For IHC use only*	7 ml

[Bulk quote request](#)

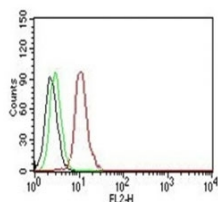
Availability	1-3 business days
Species Reactivity	Human, Mouse
Format	Purified
Clonality	Monoclonal (mouse origin)
Isotype	Mouse IgG2a, kappa
Clone Name	SPM587
Purity	Protein G affinity chromatography
UniProt	P24385
Localization	Nuclear
Applications	Flow Cytometry : 1-2ug/10 ⁶ cells Western Blot : 1-2ug/ml Immunohistochemistry (FFPE) : 1-2ug/ml for 30 min at RT
Limitations	This CCND1 antibody is available for research use only.



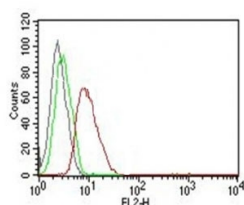
IHC: Formalin-fixed, paraffin-embedded human mantle cell lymphoma stained with CCND1 antibody.



Western blot testing of 1) human HepG2, 2) mouse NIH3T3 and 3) mouse C2C12 lysate with CCND1 antibody. Expected/observed molecular weight ~32-36kDa.



Flow Cytometry testing of Jurkat cells. Black: cells alone; Green: isotype control; Red: [PE-labeled Cyclin D1 antibody](#).



Flow Cytometry testing of MCF-7 cells. Black: cells alone; Green: isotype control; Red: [PE-labeled Cyclin D1 antibody](#).

Description

Cyclin D1 (CCND1), one of the key cell cycle regulators, is a putative proto-oncogene overexpressed in a wide variety of human neoplasms. About 60% of mantle cell lymphomas (MCL) contain a t(11; 14)(q13; q32) translocation resulting in over-expression of Cyclin D1. This antibody is useful in identifying mantle cell lymphomas (CCND1+) from CLL/SLL and follicular lymphomas (CCND1-). Occasionally, hairy cell leukemia and plasma cell myeloma weakly express CCND1.

Application Notes

The optimal dilution of the CCND1 antibody for each application should be determined by the researcher.

1. Staining of formalin-fixed tissues requires boiling tissue sections in pH 9 10mM Tris with 1mM EDTA for 10-20 min followed by cooling at RT for 20 minutes.
2. The prediluted format is supplied in a dropper bottle and is optimized for use in IHC. After epitope retrieval step (if required), drip mAb solution onto the tissue section and incubate at RT for 30 min.

Immunogen

Recombinant full length human protein was used as the immunogen for this CCND1 antibody.

Storage

Store the CCND1 antibody at 2-8°C (with azide) or aliquot and store at -20°C or colder (without azide).

