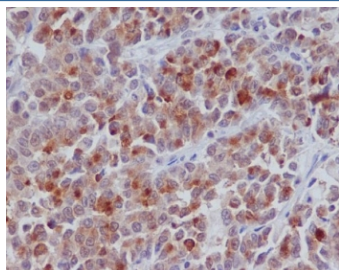


## CCNB1 Antibody / Cyclin B1 [clone EOG-3] (RQ5432)

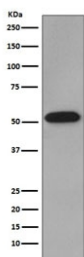
Catalog No.	Formulation	Size
RQ5432	Antibody in PBS with 0.02% sodium azide, 50% glycerol and 0.4-0.5mg/ml BSA	100 ul

[Bulk quote request](#)

Availability	1-2 weeks
Species Reactivity	Human
Format	Purified
Clonality	Rabbit Monoclonal
Isotype	Rabbit IgG
Clone Name	EOG-3
Purity	Affinity purified
UniProt	P14635
Localization	Cytoplasmic, nuclear
Applications	Western Blot : 1:500-1:2000 Immunohistochemistry (FFPE) : 1:50-1:200
Limitations	This CCNB1 antibody is available for research use only.



IHC staining of FFPE human colon cancer with CCNB1 antibody. HIER: boil tissue sections in pH6, 10mM citrate buffer, for 10-20 min and allow to cool before testing.



Western blot testing of human HeLa cell lysate with CCNB1 antibody. Predicted molecular weight: 48-60 kDa.

## Description

The protein encoded by the CCNB1 gene is a regulatory protein involved in mitosis. The gene product complexes with p34(cdc2) to form the maturation-promoting factor (MPF). The encoded protein is necessary for proper control of the G2/M transition phase of the cell cycle. [RefSeq]

## Application Notes

Optimal dilution of the CCNB1 antibody should be determined by the researcher.

## Immunogen

A synthetic peptide specific to human Cyclin B1 / CCNB1 was used as the immunogen for the CCNB1 antibody.

## Storage

Store the CCNB1 antibody at -20oC.