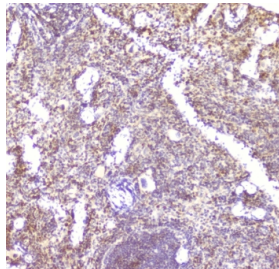


CCL6 Antibody (RQ4665)

Catalog No.	Formulation	Size
RQ4665	0.5mg/ml if reconstituted with 0.2ml sterile DI water	100 ug

Bulk quote request

Availability	1-3 business days
Species Reactivity	Mouse
Format	Antigen affinity purified
Host	Rabbit
Clonality	Polyclonal (rabbit origin)
Isotype	Rabbit IgG
Purity	Antigen affinity purified
Buffer	Lyophilized from 1X PBS with 2% Trehalose and 0.025% sodium azide
UniProt	P27784
Localization	Secreted
Applications	Western Blot : 0.5-1ug/ml IHC (FFPE) : 1-2ug/ml ELISA (Capture) : 1-5ug/ml (mouse recombinant protein)
Limitations	This CCL6 antibody is available for research use only.



IHC staining of FFPE mouse spleen with CCL6 antibody at 2ug/ml. HIER: boil tissue sections in pH6, 10mM citrate buffer, for 10-20 min followed by cooling at RT for 20 min.

kDa
72-
55-
43-
34-
26-
17-
10-

Western blot testing of 1ng of mouse recombinant protein with CCL6 antibody at 0.5ug/ml.

Description

Chemokine (C-C motif) ligand 6 (CCL6) is a small cytokine belonging to the CC chemokine family that has only been identified in rodents. In mice, CCL6 is expressed in cells from neutrophil and macrophage lineages, and can be greatly induced under conditions suitable for myeloid cell differentiation. It is highly expressed in bone marrow cultures that have been stimulated with the cytokine GM-CSF. Some low levels of gene expression also occur in certain cell lines of myeloid origin (e.g. the immature myeloid cell lines DA3 and 32D cl3, and the macrophage cell line P388D) that can also be greatly induced in culture with GM-CSF. However, in activated T cell lines, expression of CCL6 is greatly reduced. CCL6 can also be induced in the mouse lung by the cytokine interleukin 13. Mouse CCL6 is located on chromosome 11. The cell surface receptor for CCL6 is believed to be the chemokine receptor CCR1.

Application Notes

Optimal dilution of the CCL6 antibody should be determined by the researcher.

Immunogen

Amino acids G22-A116 from the mouse protein were used as the immunogen for the CCL6 antibody.

Storage

After reconstitution, the CCL6 antibody can be stored for up to one month at 4oC. For long-term, aliquot and store at -20oC. Avoid repeated freezing and thawing.