

CCL4 Antibody (F40003)

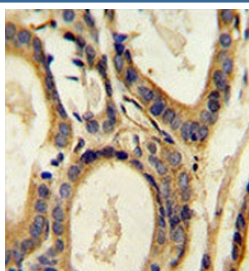
Catalog No.	Formulation	Size
F40003-0.4ML	In 1X PBS, pH 7.4, with 0.09% sodium azide	0.4 ml
F40003-0.08ML	In 1X PBS, pH 7.4, with 0.09% sodium azide	0.08 ml

[Bulk quote request](#)

Availability	1-3 business days
Species Reactivity	Human, Mouse
Format	Antigen affinity purified
Clonality	Polyclonal (rabbit origin)
Isotype	Rabbit Ig
Purity	Antigen affinity
UniProt	P13236
Applications	Western Blot : 1:1000 IHC (Paraffin) : 1:50-1:100
Limitations	This CCL4 antibody is available for research use only.



CCL4 antibody western blot analysis in mouse bladder tissue lysate (15ug/lane).



CCL4 antibody immunohistochemistry analysis in formalin fixed and paraffin embedded human prostate carcinoma.

Description

This gene is one of several cytokine genes clustered on the q-arm of chromosome 17. Cytokines are a family of secreted proteins involved in immunoregulatory and inflammatory processes. This protein is CCL4 which inhibits HIV entry by binding to the cellular receptor CCR5. The copy number of this gene varies among individuals; most individuals have 1-5 copies in the diploid genome, although rare individuals do not contain this gene at all. The human genome reference assembly contains two copies of this gene. This record represents the more centromeric gene. [provided by RefSeq].

Application Notes

Titration of the CCL4 antibody may be required due to differences in protocols and secondary/substrate sensitivity.

Immunogen

A portion of amino acids 22-48 from the human protein was used as the immunogen for this CCL4 antibody.

Storage

Aliquot the CCL4 antibody and store frozen at -20oC or colder. Avoid repeated freeze-thaw cycles.