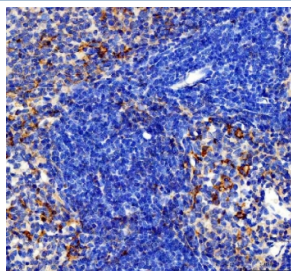


## CCL4 Antibody / C-C Motif Chemokine Ligand 4 / MIP-1 beta (R31493)

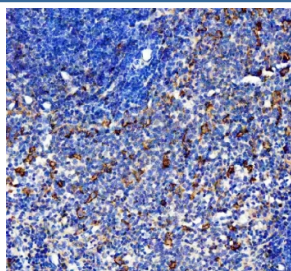
Catalog No.	Formulation	Size
R31493	0.5mg/ml if reconstituted with 0.2ml sterile DI water	100 ug

**Bulk quote request**

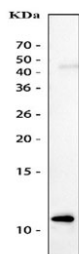
<b>Availability</b>	1-3 business days
<b>Species Reactivity</b>	Rat
<b>Format</b>	Antigen affinity purified
<b>Clonality</b>	Polyclonal (rabbit origin)
<b>Isotype</b>	Rabbit IgG
<b>Purity</b>	Antigen affinity
<b>Buffer</b>	Lyophilized from 1X PBS with 2% Trehalose
<b>Gene ID</b>	116637
<b>Applications</b>	Western Blot : 0.5-1ug/ml Immunohistochemistry (FFPE) : 2-5ug/ml
<b>Limitations</b>	This CCL4 antibody is available for research use only.



IHC staining of FFPE rat spleen tissue with CCL4 antibody. HIER: boil tissue sections in pH8 EDTA for 20 min and allow to cool before testing.



IHC staining of FFPE rat spleen tissue with CCL4 antibody. HIER: boil tissue sections in pH8 EDTA for 20 min and allow to cool before testing.



Western blot testing of CCL4 antibody recombinant rat CCL4 protein (10ng/lane).

## Description

Chemokine (C-C motif) ligand 4 is a protein which in human is encoded by the CCL4 gene. By analysis of somatic cell hybrids and by in situ hybridization, the gene was assigned to 17q21-q23. It is a CC chemokine with specificity for CCR5 receptors. It is a chemoattractant for natural killer cells, monocytes and a variety of other immune cells. CCL4 is a major HIV-suppressive factor produced by CD8+ T cells. Performing-low memory CD8+ T cells that normally synthesize CCL4. Based on functional analysis, one or more additional beta chemokine receptors that transduce CCL4 signals must also exist. MIP-1alpha and CCL4 have been shown to lack affinity for the erythrocyte surface chemokine receptor/Duffy antigen that binds many alpha as well as beta chemokines(11, 14).

## Application Notes

The stated application concentrations are suggested starting amounts. Titration of the CCL4 antibody may be required due to differences in protocols and secondary/substrate sensitivity.

## Immunogen

Rat partial recombinant protein (AA 24-92) was used as the immunogen for this CCL4 antibody.

## Storage

After reconstitution, the CCL4 antibody can be stored for up to one month at 4oC. For long-term, aliquot and store at -20oC. Avoid repeated freezing and thawing.