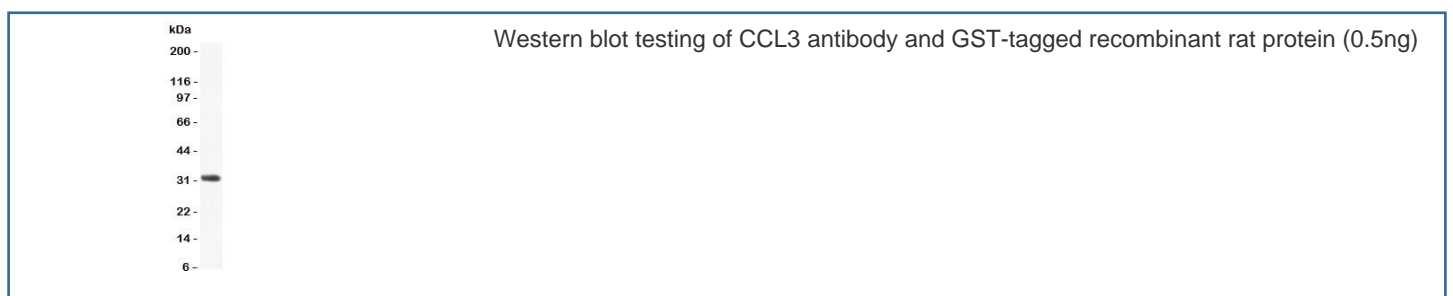


CCL3 Antibody (R31454)

Catalog No.	Formulation	Size
R31454	0.5mg/ml if reconstituted with 0.2ml sterile DI water	100 ug

[Bulk quote request](#)

Availability	1-3 business days
Species Reactivity	Rat
Format	Antigen affinity purified
Host	Rabbit
Clonality	Polyclonal (rabbit origin)
Isotype	Rabbit IgG
Purity	Antigen affinity
Buffer	Lyophilized from 1X PBS with 2.5% BSA and 0.025% sodium azide
Gene ID	25542
Applications	Western Blot : 0.5-1ug/ml ELISA : 0.1-0.5ug/ml (rat protein tested)
Limitations	This CCL3 antibody is available for research use only.



Description

Macrophage inflammatory protein-1 alpha (MIP-1 alpha) is also called CCL3, LD78. The cDNA for CCL3 predicts a mature peptide of 69 amino acids with a molecular mass of 7,889 daltons. CCL3 is a member of a newly identified superfamily of small inducible proteins involved in inflammatory responses, wound healing and tumorigenesis. CCL3 is a chemokine that has pro-inflammatory and stem cell inhibitory activities in vitro. It constitutes an important second signal for mast cell degranulation in the conjunctiva in vivo and consequently for acute-phase disease.

Application Notes

The stated application concentrations are suggested starting amounts. Titration of the CCL3 antibody may be required due to differences in protocols and secondary/substrate sensitivity.

Immunogen

Rat partial recombinant protein (AA 24-92) was used as the immunogen for this CCL3 antibody.

Storage

After reconstitution, the CCL3 antibody can be stored for up to one month at 4°C. For long-term, aliquot and store at -20°C. Avoid repeated freezing and thawing.