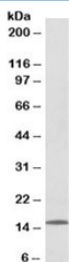


CCL21 Antibody (R35269)

Catalog No.	Formulation	Size
R35269-100UG	0.5 mg/ml in 1X TBS, pH7.3, with 0.5% BSA (US sourced) and 0.02% sodium azide	100 ug

[Bulk quote request](#)

Availability	1-3 business days
Species Reactivity	Human
Format	Antigen affinity purified
Host	Goat
Clonality	Polyclonal (goat origin)
Isotype	Goat Ig
Purity	Antigen affinity
Gene ID	6366
Applications	Western Blot : 0.03-0.1ug/ml ELISA (peptide) LOD : 1:1000
Limitations	This CCL21 antibody is available for research use only.



Western blot testing of human lymph node lysate with CCL21 antibody at 0.1ug/ml.
Predicted molecular weight: ~15kDa.

Description

Additional name(s) for this target protein: Chemokine (C-C motif) ligand 21

Application Notes

Optimal dilution of the CCL21 antibody should be determined by the researcher.

Immunogen

Amino acids QGCRKDRGASKTG were used as the immunogen for this CCL21 antibody.

Storage

Aliquot and store the CCL21 antibody at -20oC.