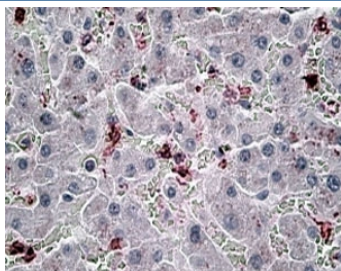


## CCL20 Antibody (R33269)

Catalog No.	Formulation	Size
R33269-100UG	0.5 mg/ml in 1X TBS, pH7.3, with 0.5% BSA (US sourced) and 0.02% sodium azide	100 ug

[Bulk quote request](#)

Availability	1-3 business days
Species Reactivity	Human
Predicted Reactivity	Pig, Cow
Format	Antigen affinity purified
Host	Goat
Clonality	Polyclonal (goat origin)
Isotype	Goat Ig
Purity	Antigen affinity
Gene ID	6364
Localization	Cytoplasmic, secreted
Applications	Immunohistochemistry (FFPE) : 6-8ug/ml ELISA (peptide) LOD : 1:16000
Limitations	This CCL20 antibody is available for research use only.



IHC testing of FFPE human liver with CCL20 antibody at 6ug/ml. HIER: steamed with pH6 citrate buffer, AP-staining.

### Description

Additional name(s) for this target protein: Chemokine (C-C motif) ligand 20; MIP-3 alpha

### Application Notes

Optimal dilution of the CCL20 antibody should be determined by the researcher.

## **Immunogen**

Amino acids CLGYTDRILHPK were used as the immunogen for this CCL20 antibody.

## **Storage**

Aliquot and store the CCL20 antibody at -20oC.