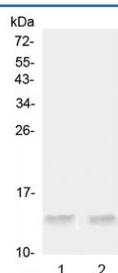


## Ccl20 Antibody / Mip-3 alpha (R32858)

Catalog No.	Formulation	Size
R32858	0.5mg/ml if reconstituted with 0.2ml sterile DI water	100 ug

**Bulk quote request**

<b>Availability</b>	1-3 business days
<b>Species Reactivity</b>	Mouse, Rat
<b>Format</b>	Antigen affinity purified
<b>Clonality</b>	Polyclonal (rabbit origin)
<b>Isotype</b>	Rabbit IgG
<b>Purity</b>	Antigen affinity
<b>Buffer</b>	Lyophilized from 1X PBS with 2.5% BSA, 0.025% sodium azide
<b>UniProt</b>	O89093
<b>Localization</b>	Cytoplasmic, secreted
<b>Applications</b>	Western Blot : 0.5-1ug/ml ELISA (Capture; Recombinant Mouse Protein) : 0.1-0.5ug/ml (BSA-free format available)
<b>Limitations</b>	This Ccl20 antibody is available for research use only.



Western blot testing of 1) rat testis and 2) mouse testis tissue lysate with Ccl20 antibody at 0.5ug/ml. Predicted molecular weight ~11 kDa.

## Description

Macrophage Inflammatory Protein 3 alpha (MIP-3 alpha), is also called Chemokine, cc motif, ligand 20 (CCL20). The MIP-3 alpha / CCL20 gene was cloned and sequenced, revealing a four exon, three intron structure, and was localized by FISH analysis to 2q35-q36. MIP3 alpha is predominantly expressed in lymph nodes, appendix, PBL, fetal liver, fetal lung and several cell lines. MIP3 alpha / CCL20 and its receptor CCR6 are markedly up-regulated in psoriasis, and they may play a role in the recruitment of T cells to lesional psoriatic skin.

## Application Notes

Optimal dilution of the Ccl20 antibody should be determined by the researcher.

## Immunogen

A recombinant mouse protein corresponding to amino acids A28-M97 was used as the immunogen for the Ccl20 antibody.

## Storage

After reconstitution, the Ccl20 antibody can be stored for up to one month at 4°C. For long-term, aliquot and store at -20°C. Avoid repeated freezing and thawing.