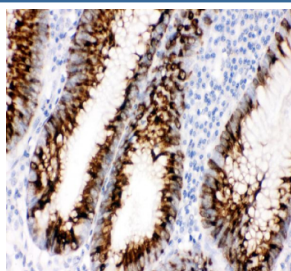


CCL11 Antibody / C-C motif chemokine 11 / Eotaxin (R32127)

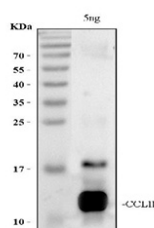
Catalog No.	Formulation	Size
R32127	0.5mg/ml if reconstituted with 0.2ml sterile DI water	100 ug

Bulk quote request

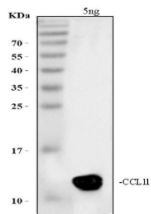
Availability	1-3 business days
Species Reactivity	Human, Mouse, Rat
Format	Antigen affinity purified
Clonality	Polyclonal (rabbit origin)
Isotype	Rabbit IgG
Purity	Antigen affinity
Buffer	Lyophilized from 1X PBS with 2.5% BSA and 0.025% sodium azide
UniProt	P51671
Applications	Western Blot : 0.5-1ug/ml (recombinant protein) Immunohistochemistry (FFPE) : 2-5ug/ml ELISA : 0.1-0.5ug/ml (human protein tested); request BSA-free format for coating
Limitations	This CCL11 antibody is available for research use only.



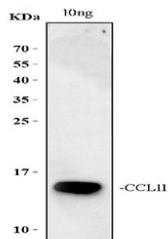
IHC staining of FFPE human colon cancer tissue with CCL11 antibody, HRP-secondary and DAB substrate. HIER: boil tissue sections in pH8 EDTA for 20 min and allow to cool before testing.



Western blot testing of recombinant human CCL11 protein with CCL11 antibody. Expected/observed molecular weight ~11 kDa.



Western blot testing of recombinant mouse CCL11 protein with CCL11 antibody.
Expected/observed molecular weight ~11 kDa.



Western blot testing of recombinant rat CCL11 protein with CCL11 antibody.
Expected/observed molecular weight ~11 kDa.

Description

CCL11 (C-C motif chemokine 11), also known as Eotaxin, is a member of the CC chemokine family and plays a key role in the selective recruitment of eosinophils during immune and inflammatory responses. It binds to the chemokine receptor CCR3, which is highly expressed on eosinophils, basophils, and certain Th2-type T cells, facilitating chemotaxis toward sites of cytokine or allergen-induced activation.

CCL11 is produced by epithelial cells, fibroblasts, smooth muscle cells, and endothelial cells in response to pro-inflammatory signals. It is widely studied in models of allergic airway inflammation, tissue remodeling, and barrier immunity. Because of its chemotactic activity and cell-specific targeting, CCL11 serves as a valuable biomarker in studies focused on immune cell trafficking and cytokine signaling.

The **CCL11 antibody** is a reliable tool for detecting endogenous Eotaxin in applications such as ELISA, western blot, immunohistochemistry, and immunofluorescence. Researchers use the CCL11 antibody from NSJ Bioreagents to measure protein expression levels, localize immune activity in tissues, and study regulatory mechanisms governing chemokine-mediated cell recruitment. With high specificity and consistent performance, the CCL11 antibody supports research in immunology, allergy models, and chemokine signaling pathways.

Application Notes

Optimal dilution of the CCL11 antibody should be determined by the researcher.

Immunogen

Amino acids 24-97 of human Eotaxin/CCL11 were used as the immunogen for the CCL11 antibody.

Storage

After reconstitution, the CCL11 antibody can be stored for up to one month at 4°C. For long-term, aliquot and store at -20°C. Avoid repeated freezing and thawing.

