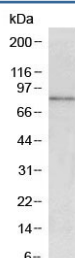


CCKBR Antibody (R34054)

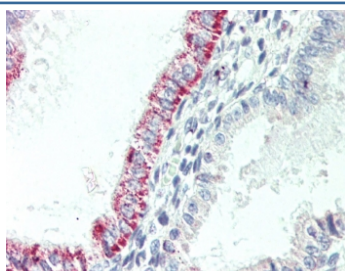
Catalog No.	Formulation	Size
R34054-100UG	0.5 mg/ml in 1X TBS, pH7.3, with 0.5% BSA (US sourced) and 0.02% sodium azide	100 ug

[Bulk quote request](#)

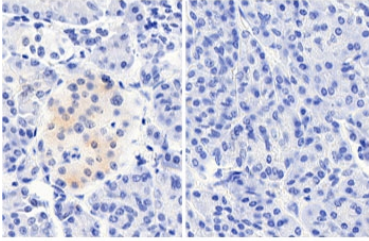
Availability	1-3 business days
Species Reactivity	Human, Mouse
Format	Antigen affinity purified
Host	Goat
Clonality	Polyclonal (goat origin)
Isotype	Goat Ig
Purity	Antigen affinity
Gene ID	887
Applications	Western Blot : 1-3ug/ml IHC (FFPE) : 5-6ug/ml ELISA (peptide) LOD : 1:16000
Limitations	This CCKBR antibody is available for research use only.



Western blot testing of mouse pancreas with CCKBR antibody at 1ug/ml. Predicted molecular weight ~48 kDa, but can be observed at 68-97 kDa.



IHC testing of FFPE human uterus tissue with CCKBR antibody at 5ug/ml. Required HIER: steamed antigen retrieval with pH6 citrate buffer; AP-staining.



with primary Ab

without primary Ab

IHC testing of FFPE human pancreas tissue with and without CCKBR antibody at 5ug/ml. Required HIER: steamed antigen retrieval with pH6 citrate buffer; HRP-staining.

Description

Additional name(s) for this target protein: Cholecystokinin B receptor

Application Notes

Optimal dilution of the CCKBR antibody should be determined by the researcher.

Immunogen

Amino acids FDGDSDSDSQSRVRNQ were used as the immunogen for this CCKBR antibody.

Storage

Aliquot and store the CCKBR antibody at -20oC.

References (1)