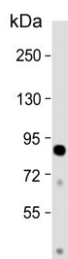


CCHCR1 Antibody / Coiled-coil alpha-helical rod protein 1 (F54973)

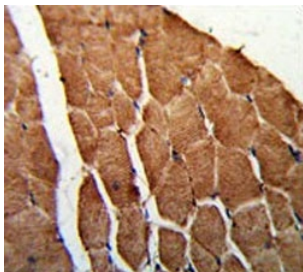
Catalog No.	Formulation	Size
F54973-0.4ML	In 1X PBS, pH 7.4, with 0.09% sodium azide	0.4 ml
F54973-0.08ML	In 1X PBS, pH 7.4, with 0.09% sodium azide	0.08 ml

[Bulk quote request](#)

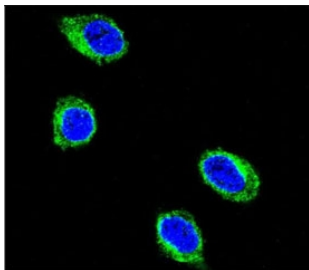
Availability	1-3 business days
Species Reactivity	Human
Format	Purified
Clonality	Polyclonal (rabbit origin)
Isotype	Rabbit Ig
Purity	Antigen affinity purified
UniProt	Q8TD31
Localization	Cytoplasmic, nuclear
Applications	Immunofluorescence : 1:10-1:50 Flow Cytometry : 1:10-1:50 (1x10 ⁶ cells) Immunohistochemistry (FFPE) : 1:50-1:100 Western Blot : 1:500-1:1000
Limitations	This CCHCR1 antibody is available for research use only.



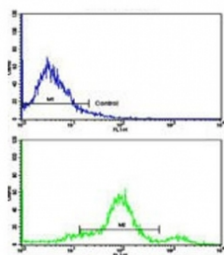
Western blot testing of human heart tissue lysate with CCHCR1 antibody. Predicted molecular weight ~89 kDa.



IHC testing of FFPE human skeletal muscle tissue with CCHCR1 antibody. HIER: steam section in pH6 citrate buffer for 20 min and allow to cool prior to staining.



Immunofluorescent staining of human HEK293 cells with CCHCR1 antibody (green) and DAPI nuclear stain (blue).



Flow cytometry testing of human WiDr cells with CCHCR1 antibody; Blue=isotype control, Green= CCHCR1 antibody.

Description

CCHCR1 may be a regulator of keratinocyte proliferation or differentiation.

Application Notes

The stated application concentrations are suggested starting points. Titration of the CCHCR1 antibody may be required due to differences in protocols and secondary/substrate sensitivity.

Immunogen

A portion of amino acids 599-627 from the human protein was used as the immunogen for the CCHCR1 antibody.

Storage

Aliquot the CCHCR1 antibody and store frozen at -20oC or colder. Avoid repeated freeze-thaw cycles.