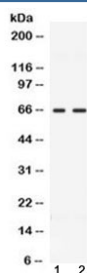


CCDC6 Antibody (R32518)

Catalog No.	Formulation	Size
R32518	0.5mg/ml if reconstituted with 0.2ml sterile DI water	100 ug

Bulk quote request

Availability	1-3 business days
Species Reactivity	Human, Rat
Format	Antigen affinity purified
Clonality	Polyclonal (rabbit origin)
Isotype	Rabbit IgG
Purity	Antigen affinity
Buffer	Lyophilized from 1X PBS with 2.5% BSA and 0.025% sodium azide
UniProt	Q16204
Localization	Cytoplasmic
Applications	Western Blot : 0.5-1ug/ml
Limitations	This CCDC6 antibody is available for research use only.



Western blot testing of 1) rat testis and 2) human MCF7 lysate with CCDC6 antibody at 0.5ug/ml. Predicted molecular weight ~53 kDa, routinely observed at ~65 kDa.

Description

Coiled-coil domain-containing protein 6 is a protein that in humans is encoded by the CCDC6 gene. This gene encodes a coiled-coil domain-containing protein. The encoded protein is ubiquitously expressed and may function as a tumor suppressor. A chromosomal rearrangement resulting in the expression of a fusion gene containing a portion of this gene and the intracellular kinase-encoding domain of the ret proto-oncogene is the cause of thyroid papillary carcinoma.

Application Notes

Differences in protocols and secondary/substrate sensitivity may require the CCDC6 antibody to be titrated for optimal performance.

Immunogen

Amino acids 156-198 (KAELEQHLEQEQEFQVNKLMKKIKKLENDTISKQLTLEQLRRE) from the human protein were used as the immunogen for the CCDC6 antibody.

Storage

After reconstitution, the CCDC6 antibody can be stored for up to one month at 4oC. For long-term, aliquot and store at -20oC. Avoid repeated freezing and thawing.