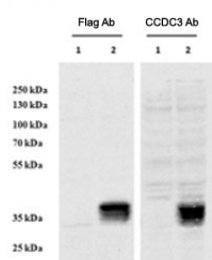


CCDC3 Antibody (R35021)

Catalog No.	Formulation	Size
R35021-100UG	0.5 mg/ml in 1X TBS, pH7.3, with 0.5% BSA (US sourced) and 0.02% sodium azide	100 ug

[Bulk quote request](#)

Availability	1-3 business days
Species Reactivity	Human
Predicted Reactivity	Cow, Dog, Mouse, Pig, Rat
Format	Antigen affinity purified
Host	Goat
Clonality	Polyclonal (goat origin)
Isotype	Goat Ig
Purity	Antigen affinity
Gene ID	83643
Applications	Western Blot : 0.5-2ug/ml ELISA (peptide) LOD : 1:64000
Limitations	This CCDC3 antibody is available for research use only.



Western blot testing of HEK293 lysate overexpressing human CCDC3-FLAG and probed with anti-FLAG in the left panel and with CCDC3 antibody (0.5ug/ml) in the right panel (empty vector transfection in each of the first lanes).

Description

Additional name(s) for this target protein: Coiled-coil domain containing 3

Application Notes

Optimal dilution of the CCDC3 antibody should be determined by the researcher.

Immunogen

Amino acids PHGVNFQDAIFPDTQ were used as the immunogen for this CCDC3 antibody.

Storage

Aliquot and store the CCDC3 antibody at -20oC.