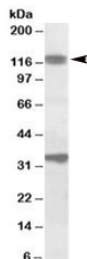


CCAR1 Antibody (R35815)

Catalog No.	Formulation	Size
R35815-100UG	0.5 mg/ml in 1X TBS, pH7.3, with 0.5% BSA (US sourced) and 0.02% sodium azide	100 ug

[Bulk quote request](#)

Availability	1-3 business days
Species Reactivity	Human, Mouse, Rat
Predicted Reactivity	Cow, Dog, Pig
Format	Antigen affinity purified
Host	Goat
Clonality	Polyclonal (goat origin)
Isotype	Goat Ig
Purity	Antigen affinity
Gene ID	55749
Applications	Western Blot : 1-3ug/ml ELISA (peptide) LOD : 1:16000
Limitations	This CCAR1 antibody is available for research use only.



Western blot testing of rat skeletal muscle lysate with CCAR1 antibody at 1ug/ml. Predicted molecular weight: ~130kDa. Both observed bands are blocked by addition of immunizing peptide.

Description

Additional name(s) for this target protein: Cell division cycle and apoptosis regulator 1

Application Notes

Optimal dilution of the CCAR1 antibody should be determined by the researcher.

Immunogen

Amino acids RYCKERPSKDKE were used as the immunogen for this CCAR1 antibody.

Storage

Aliquot and store the CCAR1 antibody at -20oC.