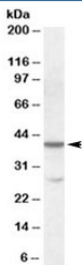


CBX8 Antibody (R35602)

Catalog No.	Formulation	Size
R35602-100UG	0.5 mg/ml in 1X TBS, pH7.3, with 0.5% BSA (US sourced) and 0.02% sodium azide	100 ug

[Bulk quote request](#)

Availability	1-3 business days
Species Reactivity	Human
Predicted Reactivity	Cow, Mouse, Pig, Rat
Format	Antigen affinity purified
Host	Goat
Clonality	Polyclonal (goat origin)
Isotype	Goat Ig
Purity	Antigen affinity
Gene ID	57332
Applications	Western Blot : 0.1-0.3ug/ml ELISA (peptide) LOD : 1:32000
Limitations	This CBX8 antibody is available for research use only.



Western blot testing of K562 lysate with CBX8 antibody at 0.1 ug/ml. The expected ~40kDa band and the additional ~28kDa band are both blocked by the immunizing peptide.

Description

Additional name(s) for this target protein: Chromobox homolog 8

Application Notes

Optimal dilution of the CBX8 antibody should be determined by the researcher.

Immunogen

Amino acids RERGTSRVDDKPSS were used as the immunogen for this CBX8 antibody.

Storage

Aliquot and store the CBX8 antibody at -20oC.