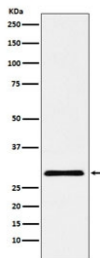


CBX7 Antibody [clone ADHB-3] (RQ4819)

Catalog No.	Formulation	Size
RQ4819	Antibody in PBS with 0.02% sodium azide, 50% glycerol and 0.4-0.5mg/ml BSA	100 ul

[Bulk quote request](#)

Availability	1-2 weeks
Species Reactivity	Human
Format	Purified
Host	Rabbit
Clonality	Rabbit Monoclonal
Isotype	Rabbit IgG
Clone Name	ADHB-3
Purity	Affinity purified
UniProt	O95931
Applications	Western Blot : 1:500-1:2000
Limitations	This CBX7 antibody is available for research use only.



Western blot testing of human HepG2 cell lysate with CBX7 antibody. Predicted molecular weight ~28 kDa.

Description

Control of cell proliferation by Polycomb group proteins (PcG) is an important facet of cellular homeostasis and its disruption can promote tumorigenesis. 'Chromobox protein homolog 7' is a PcG protein which is found to control the growth of normal cells.

Application Notes

Optimal dilution of the CBX7 antibody should be determined by the researcher.

Immunogen

A synthetic peptide specific to human CBX7 was used as the immunogen for the CBX7 antibody.

Storage

Store the CBX7 antibody at -20oC.