

## CBX1 Antibody (R35468)

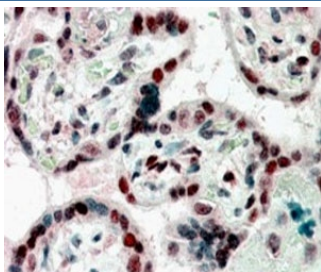
Catalog No.	Formulation	Size
R35468-100UG	0.5 mg/ml in 1X TBS, pH7.3, with 0.5% BSA (US sourced) and 0.02% sodium azide	100 ug

[Bulk quote request](#)

Availability	1-3 business days
Species Reactivity	Human
Predicted Reactivity	Cow, Dog, Mouse, Rat
Format	Antigen affinity purified
Host	Goat
Clonality	Polyclonal (goat origin)
Isotype	Goat Ig
Purity	Antigen affinity
Gene ID	10951
Applications	Western Blot : 0.3-1.0 ug/ml Immunohistochemistry (FFPE) : 2-3ug/ml ELISA (peptide) LOD : 1:32000
Limitations	This CBX1 antibody is available for research use only.



Western blot testing of A431 lysate with CBX1 antibody at 0.3ug/ml. Predicted molecular weight ~25kDa.



IHC staining of FFPE human placenta with CBX1 antibody at 2.5ug/ml. HIER: steamed with pH6 citrate buffer, AP-staining.

## Description

Additional name(s) for this target protein: Chromobox homolog 1, HP1-Beta

## Application Notes

Optimal dilution of the CBX1 antibody should be determined by the researcher.

## Immunogen

Amino acids QSQKTAHETDKSE were used as the immunogen for this CBX1 antibody.

## Storage

Aliquot and store the CBX1 antibody at -20oC.