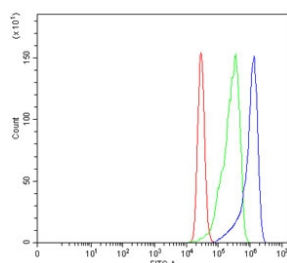


CBS Antibody / Cystathionine Beta Synthase [clone 5B5D7] (RQ7271)

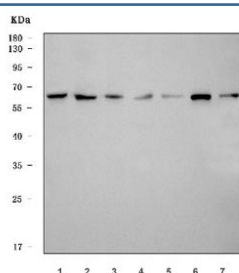
Catalog No.	Formulation	Size
RQ7271	0.5mg/ml if reconstituted with 0.2ml sterile DI water	100 ug

Bulk quote request

Availability	1-3 business days
Species Reactivity	Human, Mouse, Rat
Format	Antigen affinity purified
Clonality	Monoclonal (mouse origin)
Isotype	Mouse IgG1
Clone Name	5B5D7
Purity	Antigen affinity purified
Buffer	Lyophilized from 1X PBS with 2% Trehalose
UniProt	P35520
Applications	Western Blot : 0.5-1ug/ml Flow Cytometry : 1-3ug/million cells
Limitations	This CBS antibody is available for research use only.



Flow cytometry testing of human MCF7 cells with CBS antibody at 1ug/million cells (blocked with goat sera); Red=cells alone, Green=isotype control, Blue= CBS antibody.



Western blot testing of 1) human HeLa, 2) human 293T, 3) human K562, 4) rat liver, 5) rat pancreas, 6) mouse liver and 7) mouse pancreas tissue lysate with CBS antibody. Predicted molecular weight ~61 kDa.

Description

CBS, Cystathionine Beta-Synthase, catalyzes the first irreversible step of transsulfuration. The CBS enzyme is a homotetramer of 63-kD subunits and requires pyridoxal phosphate and heme for activity. The CBS gene, which is mapped to chromosome 21q22, contains 23 exons, ranging in size from 42 to 299 bp. The human CBS protein can substitute for the endogenous yeast CBS protein in *Saccharomyces cerevisiae*. The catalytic domain of the CBS protein is located in the N-terminal 409 amino acids, and a regulatory domain is located in the C-terminal 142 amino acids. A mutation that deletes the C-terminal 145 amino acids of CBS could restore activity of several CBS mutant alleles found in homocystinurics.

Application Notes

Optimal dilution of the CBS antibody should be determined by the researcher.

Immunogen

Recombinant human protein (amino acids K102-E342) was used as the immunogen for the CBS antibody.

Storage

After reconstitution, the CBS antibody can be stored for up to one month at 4°C. For long-term, aliquot and store at -20°C. Avoid repeated freezing and thawing.