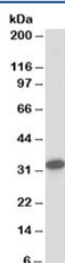


CBR1 Antibody (R34191)

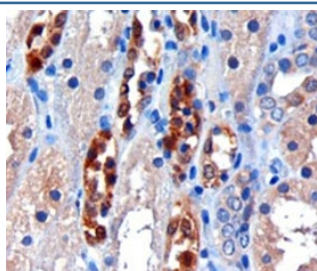
Catalog No.	Formulation	Size
R34191-100UG	0.5 mg/ml in 1X TBS, pH7.3, with 0.5% BSA (US sourced) and 0.02% sodium azide	100 ug

[Bulk quote request](#)

Availability	1-3 business days
Species Reactivity	Human
Format	Antigen affinity purified
Host	Goat
Clonality	Polyclonal (goat origin)
Isotype	Goat Ig
Purity	Antigen affinity
Gene ID	873
Applications	Western Blot : 0.1-0.3ug/ml Immunohistochemistry (FFPE) : 1-2ug/ml ELISA (peptide) LOD : 1:8000
Limitations	This CBR1 antibody is available for research use only.



Western blot testing of human liver lysate with CBR1 antibody at 0.2ug/ml. Predicted molecular weight: ~30kDa.



IHC staining of FFPE human kidney with CBR1 antibody at 3ug/ml. HIER: microwaved with pH6 citrate buffer, HRP-staining.

Description

Additional name(s) for this target protein: Carbonyl reductase 1

Application Notes

Optimal dilution of the CBR1 antibody should be determined by the researcher.

Immunogen

Amino acids HGQFVSEKRVEQW were used as the immunogen for this CBR1 antibody.

Storage

Aliquot and store the CBR1 antibody at -20oC.