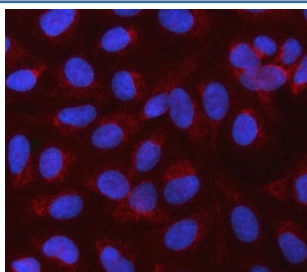


CBLIF Antibody / Cobalamin binding intrinsic factor / GIF (RQ7732)

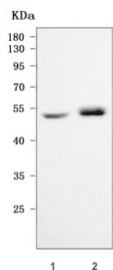
Catalog No.	Formulation	Size
RQ7732	0.5mg/ml if reconstituted with 0.2ml sterile DI water	100 ug

Bulk quote request

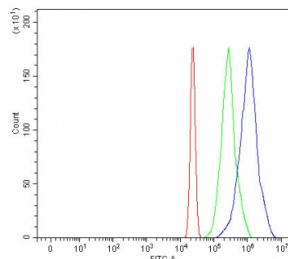
Availability	1-3 business days
Species Reactivity	Human, Mouse
Format	Antigen affinity purified
Host	Rabbit
Clonality	Polyclonal (rabbit origin)
Isotype	Rabbit IgG
Purity	Antigen affinity purified
Buffer	Lyophilized from 1X PBS with 2% Trehalose
UniProt	P27352
Applications	Western Blot : 0.5-1ug/ml Immunofluorescence : 5ug/ml Flow Cytometry : 1-3ug/million cells Direct ELISA : 0.1-0.5ug/ml
Limitations	This CBLIF antibody is available for research use only.



Immunofluorescent staining of FFPE human U-2 OS cells with CBLIF antibody (red) and DAPI nuclear stain (blue). HIER: steam section in pH6 citrate buffer for 20 min.



Western blot testing of 1) human HGC-27 and 2) mouse stomach tissue lysate with CBLIF antibody. Predicted molecular weight ~45 kDa but may be observed at higher molecular weights due to glycosylation.



Flow cytometry testing of human U937 cells with CBLIF antibody at 1ug/million cells (blocked with goat sera); Red=cells alone, Green=isotype control, Blue= CBLIF antibody.

Description

This gene is a member of the cobalamin transport protein family. It encodes a glycoprotein secreted by parietal cells of the gastric mucosa and is required for adequate absorption of vitamin B12. Vitamin B12 is necessary for erythrocyte maturation and mutations in this gene may lead to congenital pernicious anemia.

Application Notes

Optimal dilution of the CBLIF antibody should be determined by the researcher.

Immunogen

E. coli-derived recombinant human protein (amino acids E128-Y417) was used as the immunogen for the CBLIF antibody.

Storage

After reconstitution, the CBLIF antibody can be stored for up to one month at 4oC. For long-term, aliquot and store at -20oC. Avoid repeated freezing and thawing.